

Palynoassemblage from intertrappean sediments of Satpura Group, Betul district, Madhya Pradesh: implications in understanding age and palaeoclimate

HEMANT SONKUSARE, BANDANA SAMANT* & D. M. MOHABEY

JPSI



Palynological study of eleven intertrappean beds at ten stratigraphic levels in Betul district, Madhya Pradesh provided new insight into biota, age and depositional environment of Satpura Group. Study indicates presence of monospecific assemblage of dinoflagellate cyst *Pierceites deccanensis* at Hiradehi intertrappean at lower stratigraphic level. Diverse palynoassemblage represented by 3 genera and 3 species of pteridophytes, one genus and one species of gymnosperms, 8 genera and 10 species of angiosperms and 12 genera and 12 species of fungal spores are recorded from Kanhobaghohli intertrappean at higher stratigraphic level. Presence of age marker taxa such as *Azolla cretacea*, *Aquilapollenites bengalensis*, *Aquilapollenites intertrappeus*, *Echitricolpites* sp., *Farabeipollis minutes*, *Farabeipollis deccanensis* sp. nov., *Jiangsupollis major* suggest Late Cretaceous (Maastrichtian) age for this intertrappean. Microflora of intertrappean beds at lower stratigraphic levels (Hiradehi and Topidhana) show deposition in semiarid-arid climate and intertrappean beds at higher stratigraphic levels especially Kanhobaghohli in warm humid climatic conditions and freshwater to estuarine depositional environment. Two intertrappean namely, Kanhobaghohli, and Hatnajhiri from this part also yielded freshwater ostracodes.

ARTICLE HISTORY

Manuscript received 10/05/2020
Manuscript accepted 20/03/2021

Keywords: Deccan Trap, Satpura Group, Intertrappean, Maastrichtian, Palynology, Biota, Clay Minerals.

¹Postgraduate Department Of Geology, Rashtrasant Tukadoji Maharaj Nagpur University, Nagpur-440001, India.
*Corresponding author's e-mail: bandanabhu@gmail.com

INTRODUCTION

Deccan Volcanic Province (DVP) is one of the largest continental flood basalt provinces in the world, occupying an area of about 500,000 km² in peninsular India in the states of Maharashtra, Madhya Pradesh, Gujarat, Karnataka, Telangana, Andhra Pradesh, Uttar Pradesh and Rajasthan. Duration of Deccan volcanism is still debated to be long, i.e. for about 6-7 Ma (Sheth and Pande, 2014) to short of about 1 Ma (Courtilot *et al.*, 1986, 2000). Chenet *et al.*, (2007, 2008) proposed that volcanism occurred in three phases, earliest one in 67-68 Ma in Maastrichtian followed by main phase in Maastrichtian Chron 29 R and the last phase in Paleocene at the base of Chron 29 R and ending in Chron 29 N. Recently, Renne *et al.* (2015), Schoene *et al.* (2015) and Sprain *et al.* (2019) suggested that the major volcanic eruptions are post K-Pg boundary and of very short duration which along with Chicxulub impact (Alvarez *et al.*, 1980) contributed to the Cretaceous-Paleogene ecosystem crises. The impact of voluminous lava flows, 1.3x10⁶ Km³ (Jay and Widdowson, 2008) on the Indian biota is expected to be more pronounced because of its close proximity to lava flows as volcanism not only changed the physical environment due to the release of large amount of climate modifying gases but also changed topography and soil type which ultimately affected the ecosystem.

The Deccan volcanic flows on the basis of petrography, geochemistry, magnetostratigraphy and Deccan basalt flow mapping are classified into four groups namely Sahyadri, Malwa, Amarkantak and Satpura Groups. The lava flows of the western India, including Kutch and Saurashtra, are still not formally classified (Deshmukh, 1984; Deshmukh *et al.*, 1996; Cox and Hawkesworth, 1984; Nair *et al.*, 1996, published geological maps and District Resource Maps of Geological Survey of India) (Fig.1). The intertrappean sediments between the flows are the windows which help in assessing biodiversity, palaeoclimate and depositional environment at the Deccan volcanic activity in different parts of DVP. As the Deccan volcanism was having different source, eruptive centers and timing of eruption (Hansen, 2005, Kale *et al.*, 2020) therefore, understanding of flora in each sub province is important to have comprehensive picture of biodiversity in DVP.

A lot of floral and faunal data are available from the Sahyadri and Amarkantak groups of DVP (Summarized by Khosla and Verma 2015; Mohabey and Samant 2019; Kapgata, 2005; Bonde, 2008, Smith *et al.*, 2015). Recently some fauna and flora was recorded from the Malwa Group in the north of Narmada river (Mohabey *et al.*, 2018; Mohabey and Samant, 2013, 2019) but faunal or palynological data from the intertrappean sediment of Satpura Group, in the south of Narmada river are still not clear. This lack of knowledge has restricted our understanding of age, depositional environment

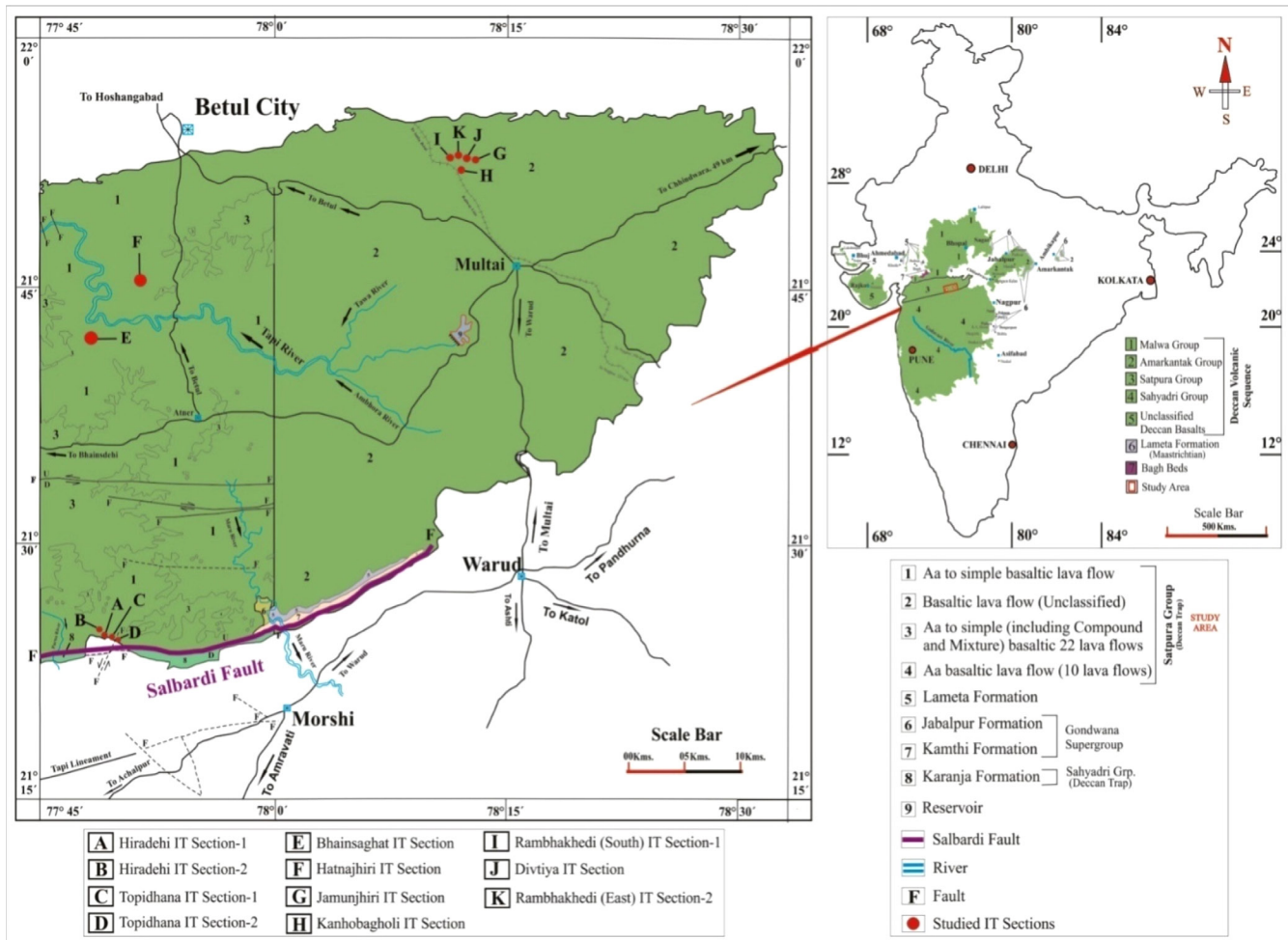


Fig. 1:- Map showing location of studied intertrappean sections (Map after District Resource Map (DRM), GSI, 2002).

and climate during the deposition of intertrappean sediments of this group. The present palynofloral record has helped in bridging this major lacuna in our knowledge.

GEOLOGY OF THE AREA

In the study area of Betul district, Archaean rocks are mostly exposed in northern part. These rocks are overlain by Jabalpur (Lower Cretaceous) and Kamthi Formations (Upper Permian to Lower Triassic) of Gondwana Supergroup. The Gondwana sediments are unconformably overlain by Late Cretaceous Lameta sediments. These 6-7 m thick Lameta sediments consist of nodular limestone, cherty limestone with intercalations of tuffaceous shales and clay. Tuffaceous shales are generally angular to sub-angular and partings of chert are present in sandy matrix and variegated white to brownish clay. They are generally northerly dipping and with very low dips of below 7°-8° (Geological Survey of India, 1998, Betul Quadrangle Geological Map (QGM), 55G; Tiwari and Bhattacharya, 1984, GSI unpublished report; Pant and Murty 2004).

In Salbardi area, the Lameta sediments are overlain by about 874 m thick lava flows. These flows are divided into two categories viz. (a) flows towards the northern part

of Salbardi lineament and (b) flows towards the southern part of Salbardi lineament. The flows towards the north of Salbardi lineament are classified as Satpura Group and to the south as Sahyadri Group. The flows of Satpura Group are mostly composed of 'Pahoehoe' and 'Aa' type flows. The flows towards the north of Salbardi lineament are 'aa' to simple Pahoehoe type. The southern flows are exposed in the Purna and Tapi rivers and composed of about 15 flows assigned to be Sahyadri Group. Sahyadri Group are often 'aa' to simple, mixed and compound Pahoehoe type. Many volcanic features represented by pipe vesicles, ropy structures, pahoehoe toes and cooling joints are present in the volcanic flows. In the lower part of top flow pipe vesicles and amygdules are also present. Middle portion of flows are generally columnar and bottom flows are with vesicles and horizontal joints (Geological Survey of India, 1998, Betul Quadrangle Geological Map (QGM), 55G).

Intertrappean sediments of the study area are in the southeastern and southwestern parts of Betul district, Madhya Pradesh. As per District Resource Map (2002) and Quadrangle Geological Map (QGM, 1998) of the study area, the flows are placed in Satpura Group. All the studied intertrappean beds occur towards the north and west of Salbardi Fault (Fig. 1). Lithologically, intertrappean beds comprise chert, cherty limestone with nodular structure, clay,

Table-1: Co-ordinates and reduce level of studied intertrappean sections in Satpura Group:

Sr. No.	Locality	Intertrappean (IT)	Co-ordinates		RL (m)
			Latitude	Longitude	
1	Hiradehi-1	IT	21°24'09.8"N	77°48'53.2"E	469
2	Hiradehi-2	IT	21°24'42.2"N	77°48'52.6"E	486
3	Topidhana-1	IT	21°24'25.6"N	77°49'32.2"E	501
4	Topidhana-2	IT	21°24'20.9"N	77°49'43.3"E	509
5	Bhainsaghat	IT	21°42'05.2"N	77°48'07.6"E	575
6	Hatnajhiri	IT	21°46'01.4"N	77°50'59.2"E	665
7	Jamunjhiri	IT	21°52'38.3"N	78°13'00.8"E	750
8	Kanhobagholi	IT	21°51'55.2"N	78°12'12.6"E	759
9	Rambhakheri South	IT	21°52'40.5"N	78°11'07.4"E	779
10	Divitiya	IT	21°52'39.5"N	78°12'16.0"E	780
11	Rambhakheri East	IT	21°52'43.00"N	78°11'46.6"E	784

shale, sandy shales. Three intertrappean beds near villages Jamunjhiri, Kanhobagholi, Divitiya and two intertrappean beds near village Rambhakheri are present in the northwest of Multai area of Betul district, Madhya Pradesh (Table-1). Lithologically, these intertrappean beds comprise cherts, cherty shales, tuffaceous shales and clay at some places (Figs. 2, 3). Thickness of these sediments varies from 0.7 m to 3.0 m and highest elevation in the area is about 784m. The most common rock types are black to greenish cherts, cherty limestone and shale at some places. Gastropods (*Physa*, *Lymnia*, and *Viviformis*) and ostracodes (Tiwari and Bhattacharyya, 1986, GSI unpublished report) are commonly recorded from these intertrappean. Fossil dicots and monocot plants and roots of monocots are also present in most of the intertrappean sediments. Towards the southwest of Betul city, intertrappean beds near Hatnajhiri and Bhainsaghat occurs at about 665 m elevation and towards the northwest of Salbardi fault two intertrappean beds near villages Hiradehi and Topidhana are present (Fig. 2). Bivalves were recorded from the fossiliferous micritic limestone of Topidhana intertrappean (Srivastava and Kandwal, 2013). Structurally, the study area is part of Tapti lineament and Satpura range (Geological Survey of India, 1998, Betul Quadrangle Geological Map (QGM), 55G). Out of the studied intertrappean beds, only Kanhobagholi and Hiradehi intertrappean beds have yielded palynomorphs. Detailed lithology and stratigraphic position of all the studied intertrappean beds are given in Figs. 2 and 3 and location of the studied intertrappean are given in Table 1.

MATERIALS AND METHODS

About 50 samples were collected from intertrappean in Satpura Group. In the laboratory, samples were washed with distilled water and crushed to fine powder. About 30-40 grams of each sample was taken for standard maceration. For removal of carbonates they were given 10% HCL treatment and for removal of silica, samples were treated with 40% Hydrofluoric Acid (HF). After that, the samples were treated with Nitric acid (HNO₃) for oxidation and with 5% Potassium Hydroxide (KOH) for removal of humic matter. Duration of

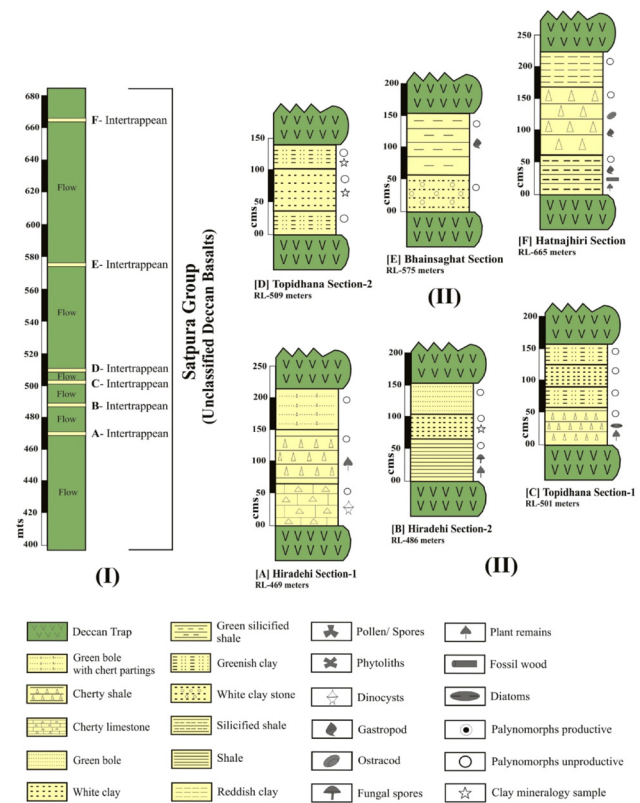


Fig. 2. I:- Stratigraphic position of studied intertrappean beds in the Deccan Volcanic Province (DVP). II:- (A, B, C, D, E, F): Lithosections of the studied intertrappean.

chemical treatment varies from sample to sample. Later on organic residue was sieved using 10-15 microns (μ m) sieves.

After completion of maceration, the final residue was divided into two parts, one part was kept for future reference and another part was taken for slide preparation for optical and Scanning Electron Microscope (SEM) study. About 6-10 or more (wherever necessary) slides were prepared using standard mounting media *viz.*, Polyvinyl Alcohol (PVA) and Canada balsam. All the slides were scanned under 20X objectives using the Biological Olympus BX-51 microscope. Optical photographs were taken under 20X, 40X and 100X objectives. SEM study of the selected palynomorphs was carried out using single grain mounting of the desired grain on the SEM Stub. All the optical slides are stored in the Museum of Department of Geology, RTM Nagpur University, Nagpur (Maharashtra), India.

Clay mineral analysis of Hiradehi and Topidhana intertrappean was carried out for climate interpretation. For separation of total clay and fine clay standard "International Pipette Method" (Jackson, 1979) was used. The samples were analyzed with X- Ray Diffraction (XRD) at the National Bureau of Soil Survey and Land Use Planning (NBSS and LUP), Nagpur, Maharashtra.

Ostracodes from the samples of Kanhobagholi, and Hatnajhiri intertrappean sediments were separated by breaking the rock into small pieces. All the palynological, micropalaeontological and optical slides of the studied specimens are stored in the Museum of the Department of Geology, RTM Nagpur University, Nagpur.

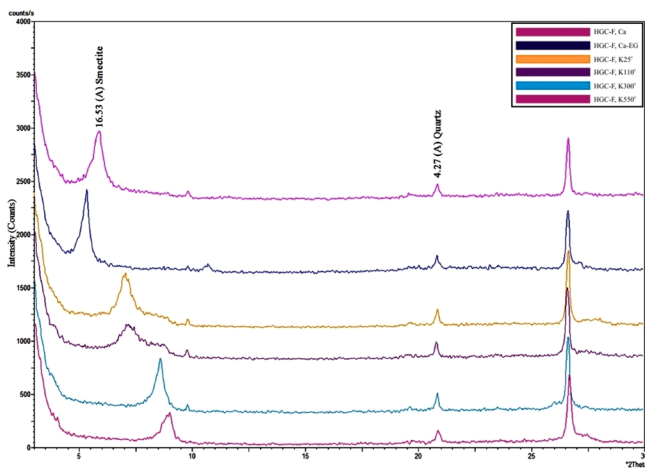


Fig. 4 (A): X-Ray Diffraction pattern of Fine clay (Green) in intertrappean sediments of Hiradehi section.

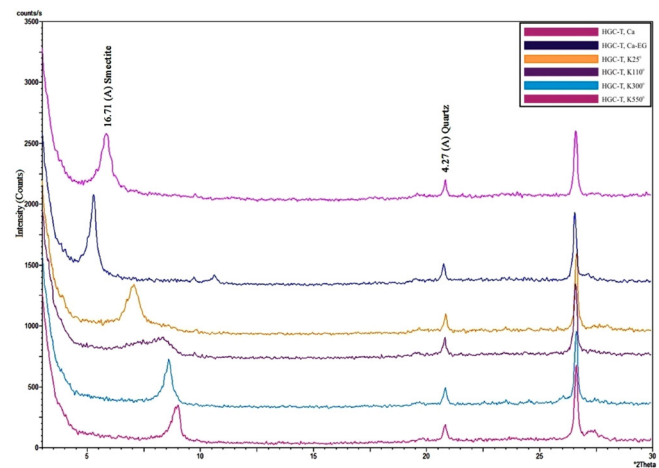


Fig. 4 (B): X-Ray Diffraction pattern of Total clay (Green) in intertrappean sediments of Hiradehi section.

Genus: *Farabeipollis* Nandi and Chattopadhyay 2002
Type species: *Farabeipollis simplex* Nandi and Chattopadhyay 2002

Farabeipollis deccanensis sp. nov.
(Pl. I, Figs. 23-28)

Derivation of name: After its record from Deccan intertrappean sediments

Holotype: Pl. 1, fig. 25; Paratype, Pl. 1, figs. 23, 26, 27

Diagnosis: Pollen grain oval in shape; heteropolar; colpi short and protrusion directed upward; exine thin at polar region and thicker at the base of equatorial protrusion; psilate.

Description: Pollen grain oval to barrel in shape; heteropolar; poles broadly rounded to acutely rounded, one pole distinctly short; equatorial projections curved upward, ends of the equatorial projections sometimes bifurcating; tricolpate; colpi present at the end of projection; exine thin in some specimens, nexine and sexine almost undifferentiable, in some specimens exine distinctly thicker (3 μm) at the base of equatorial projection and thinner at the polar region and apertural region; psilate sculpture.

Dimensions: 17-29 x 35-39 μm in size; projections 11-15 μm long, colpi 4-5 μm long; exine 1-2 μm thick, nexine 0.2 to 0.88 μm , sexine 0.2 μm to 0.93 μm

Remarks: Heteropolar poles, curved equatorial projection, thin exine at polar region and thicker at the base of equatorial protrusion are the diagnostic features of the newly erected species.

Type Locality and Horizon: Kanhobagholi intertrappean (chert), Betul District, Madhya Pradesh.

Affinity: Uncertain.

Specimen studied: 20.

III Non Pollen Palynomorphs (NPPs)

A) Fungal Spores

Genus: *Dicellaesporites* Elsik 1968

Type species: *Dicellaesporites popovii* Elsik 1968

Dicellaesporites intertrappea sp. nov.
(Pl. III, Fig. 1)

Derivation of name: After its record from intertrappean

sediments

Holotype: Pl. III, fig. 1.

Diagnosis: Spores barrel shaped; septa thin; hyaline septal girdle about 2-3 μm wide, melanine and/ or dark brown to light yellow in colour; spore wall thin; psilate.

Description: Spores barrel shaped, ends flat to slightly curved; septa thick, hyaline, septal girdle generally broad throughout the width of the spore, sometimes narrow in the central part and wider towards the peripheral region, spore wall thin; psilate.

Dimensions: 15-36 μm in size; septal girdle about 2-3 μm wide

Remarks: Barrel shape and distinctly hyaline septal girdle are the diagnostic character of these fungal spores.

Type Locality and Horizon: Kanhobagholi intertrappean (chert), Betul District, Madhya Pradesh.

Affinity: Uncertain.

Specimen studied: 05.

Dicellaesporites sp.

(Pl. III, Figs. 2-3)

Description: Spores oval in shape; ends broadly rounded; cells equal in size; septa thin; spore wall thin; psilate to spinulate sculpture.

Dimensions: 15-22 x 17-25 μm in size; septal girdle about 2-3 μm wide.

Remarks: Rounded ends and cells of equal size are the diagnostic characters of these fungal spores. Since only two forms are recorded therefore no new name has been proposed.

Type Locality and Horizon: Kanhobagholi intertrappean (chert), Betul District, Madhya Pradesh.

Affinity: Uncertain.

Specimen studied: 02.

Genus: *Involutisporonites* Clarke 1965

Type species: *Involutisporonites foraminus* Clarke 1965

Involutisporonites sp.

Pl. III, Figs. 7-8

Description: Fungal spores coiled; transversely septate; multicellate; multiseptate; cells smaller in centre and bigger in outer region, individual cells circular to subcircular; spore

Table-2 (A, B): Biota and their concentration from intertrappean sediments of Satpura Group, Betul district, Madhya Pradesh. (A): Studied microflora and their concentration

Flora	Locality	Group	Fossil Taxa	Fossils count	References		
Pollen/ Spores	Kanhobagholi	Pteridophytes	<i>Azolla cretacea</i>	02	Present Study		
			<i>Cyathidites australis</i>	05			
			<i>Gabonispuris vigourouxii</i>	07			
	Kanhobagholi	Gymnosperms	<i>Ephedripites ovatus</i>	01	Present Study		
			<i>Ephedripites</i> sp.	03			
			<i>Aquilapollenites bengalensis</i>	46			
			<i>Aquilapollenites intertrappeus</i>	02			
			<i>Echitricolpites</i> sp.	02			
			<i>Farabeipollis minutus</i> ,	65			
			<i>Farabeipollis deccanensis</i> sp. nov.	22			
	Kanhobagholi	Angiosperms	<i>Incrotonipollis neyvelii</i>	02	Present Study		
			<i>Jiangsupollis major</i>	02			
			<i>Proxapertites operculatus</i>	04			
			<i>Striacolporites ovatus</i>	02			
			<i>Striacolporites</i> sp.	01			
<i>Spinizonocolpites echinatus</i>			03				
<i>Spinizonocolpites</i> sp. A			01				
<i>Dicellaesporites intertrappea</i> sp. nov.			05				
<i>Dicellaesporites</i> sp.			02				
<i>Diporicellaesporites fusiformis</i>			01				
Kanhobagholi	Fungal Spores	<i>Inapertisporites</i> sp.	02	Present Study			
		<i>Involutisporonites</i> sp.	02				
		<i>Papulosporonites multicellates</i>	16				
		<i>Papulosporonites siwalikus</i>	05				
		<i>Papulosporonites subcircularis</i>	15				
		<i>Phragmothyrites</i> sp.	03				
		<i>Monoporisorites</i> sp.	01				
		Jamunjhiri Hatnajhiri, Kanho- bagholi and Rambhakhedi	Fungal Spores		<i>Palaeomyces globatus</i>	> 20	Present Study
					Chlamydo spores of Mycorrhizal fungi		
		Plant tissues	Divtiya		Poaceae	Long silica cells	01
(Angiosperm)	Burnt leaf cuticles			01	Present Study		
Diatom	Topidhana	--	<i>Aulacoseira</i> sp.	> 100	Present Study		
Dinoflagellate Cysts	Hiradehi	Peridiniaceae	<i>Pierceites deccanensis</i>	40	Present Study		

wall thin; psilate.

Dimensions: 17-25x42-50 µm in size.

Remarks: Cells smaller in center and bigger in outer region are the diagnostic characters of these specimens.

Type Locality and Horizon: Kanhobagholi intertrappean

(chert), Betul District, Madhya Pradesh.

Affinity: Uncertain.

Specimen studied: 03.

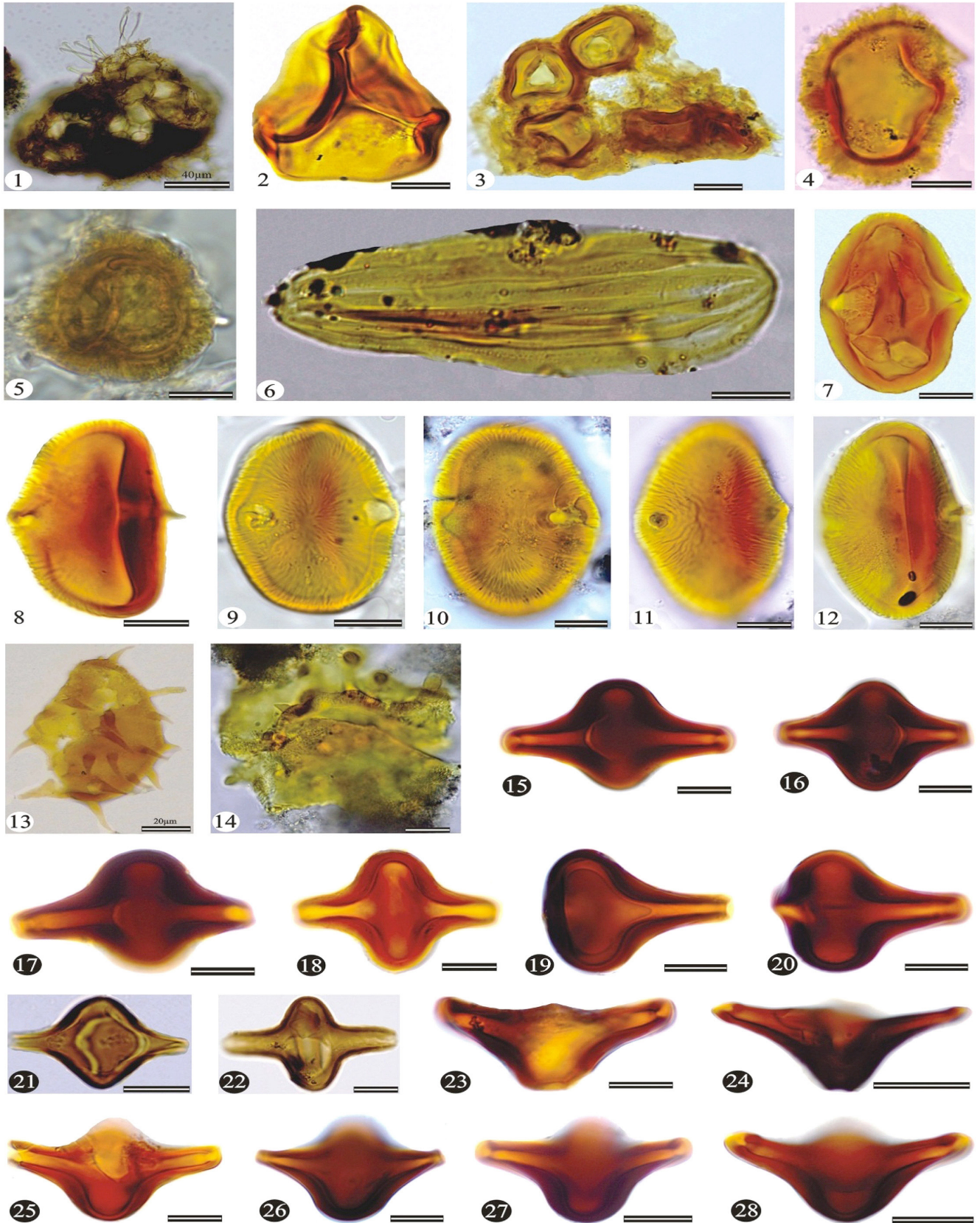
Genus: *Monoporisorites* Van der Hammen emend.

EXPLANATION OF PLATE-I

(Scale bar represents 10 µm or otherwise mentioned)



Fig.-1. *Azolla cretacea* Stanley 1965; Slide No.- PGNU/BG-C-16-5/It1; Fig.-2. *Cyathidites australis* Couper 1953; Slide No.- PGNU/PGNU/KN/IT/1; Fig.-3-5. *Gabonispuris vigourouxii* Boltenhagen 1967. Slide Nos.- (3) PGNU/KN/IT/2, EF- 59Q; (4) PGNU/KN/IT/3 and (5) PGNU/BT/IT/4; Fig.- 6. *Ephedripites* sp.; Slide No.- PGNU/AMB/It6; Figs.- 7-10. *Aquilapollenites bengalensis* Baksi and Deb extended Samant, Mohabey and Paudyal 2013 in equatorial view; Slide Nos.- (7) PGNU/KN/IT/5, (8) PGNU/KN/IT/2, (9) PGNU/BT/IT/6 and (10) PGNU/ BT/IT/7; Figs.- 11-12. *Aquilapollenites intertrappeus* Samant *et al.*, 2013 in equatorial view; Slide Nos.- (11, 12) PGNU/BT/IT/8; Figs.- 13-14. *Echitricolpites* sp.; Slide Nos.- (13) PGNU/KN/IT/9 and (14) PGNU/BT/IT/8; Figs.- 15-22 *Farabeipollis minutus* Samant *et al.*, 2013 in equatorial view (showing variations in morphological characters) Slide Nos.- (15) PGNU/KN/IT/10, (16) PGNU/KN/IT/11, (17) PGNU/KN/IT/5, (18) PGNU/KN/IT/12, (19) PGNU/KN/IT/12, (20) PGNU/KN/IT/15, (21) PGNU/KN/IT/13, (22) PGNU/KN/IT/14; Figs.- 23-28 *Farabeipollis deccanensis* sp. nov. in equatorial view (showing morphological variations) Slide Nos.- (23) PGNU/KN/IT/16, (24) PGNU/KN/IT/10, (25) PGNU/KN/IT/12, (26) PGNU/KN/IT/17, (27) PGNU/KN/IT/11, (28) PGNU/KN/IT/11.



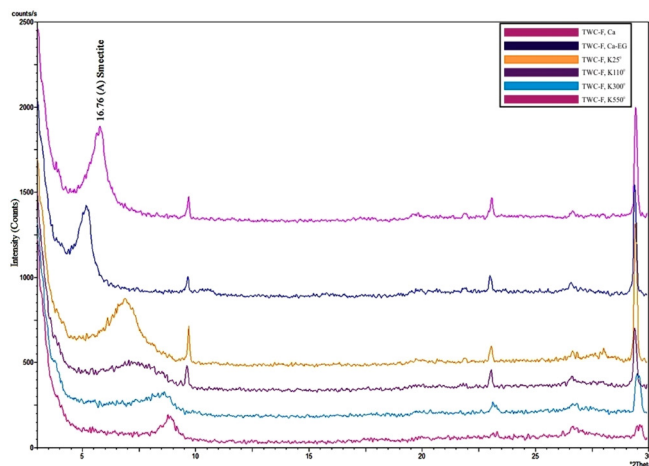


Fig. 5 (A): X-Ray Diffraction pattern of Fine clay (White) in intertrappean sediments of Topidhana section.

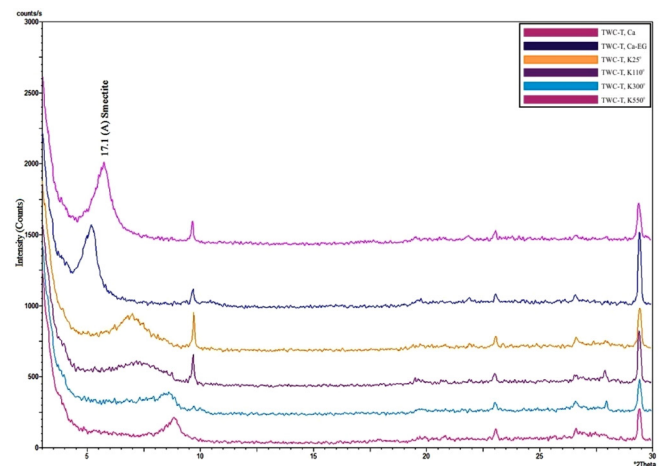


Fig. 5 (B): X-Ray Diffraction pattern of Total clay (White) in intertrappean sediments of Topidhana section.

Kalgutkar & Jansonius 2000

Type Species: *Monoporisorites minutus* Van der Hammen 1954

Monoporisorites sp.
(Pl. III, Fig. 9)

Description: Fungal spore oval in shape; monoporate; nonseptate; unicellate; cell wall psilate to finely punctate.

Dimensions: 15-33 μm in size.

Remarks: Only one form is recorded.

Type Locality and Horizon: Jamunjhiri intertrappean (chert), Betul District, Madhya Pradesh.

Affinity: Uncertain.

Specimen studied: 01.

Genus: *Phragmothyrites* Edwards 1922 emend.

Kalgutkar & Jansonius 2000

Type species: *Phragmothyrites eocaenicus* Edwards 1922. *Microthallites* Dilcher 1965.

Phragmothyrites sp.
(Pl. III, Fig. 21)

Description: Stroma circular, discoidal; non-ostiolate; center of stroma consists of irregularly angled cells; central cells often much darker than the rest of the stroma, central cells are nonporate or \pm rectangular and subrounded by radially elongated nonporate cells, rest of the cells non porate; peripheral outline slightly undulating, cells of outermost layer relatively hyaline free mycelium lacking.

Dimensions: 80-90 μm in diameter.

Remarks: Discoidal ascomata, non ostiolate, radially

arranged hyphae are the diagnostic character of this genus. Only three form are recorded and due to poor preservation specific character are difficult to ascertain.

Type Locality and Horizon: Kanhobagholi intertrappean (chert), Betul District, Madhya Pradesh.

Affinity: Microthyriaceae.

Specimen studied: 03.

B) Dinoflagellate cysts

Genus: *Pierceites* Habib and Drugg 1987

Type species: *Pierceites schizocystis* Habib and Drugg 1987

Pierceites deccanensis Prasad *et al.* 2018
(Pl. III, Figs. 22-24)

Description: Dinoflagellate cysts pentagonal-triangular in shape; wall about 0.5-1 μm thick; one apical horn and two equal entapical horn present, archeopyle is expressed by sutural lines of dehiscence, defining plate boundaries; cyst surface smooth.

Dimensions: 30-48 x 53-64 μm in size

Remarks: In overall appearance it shows similarity with *Pierceites deccanensis* described by Prasad *et al.* 2018. Due to poor preservation of the present form, most of the characteristics are not distinct.

Type Locality and Horizon: Hiradehi intertrappean (Cherty limestone), Betul District, Madhya Pradesh.

Affinity: Peridiniaceae.

Specimen studied: 40.

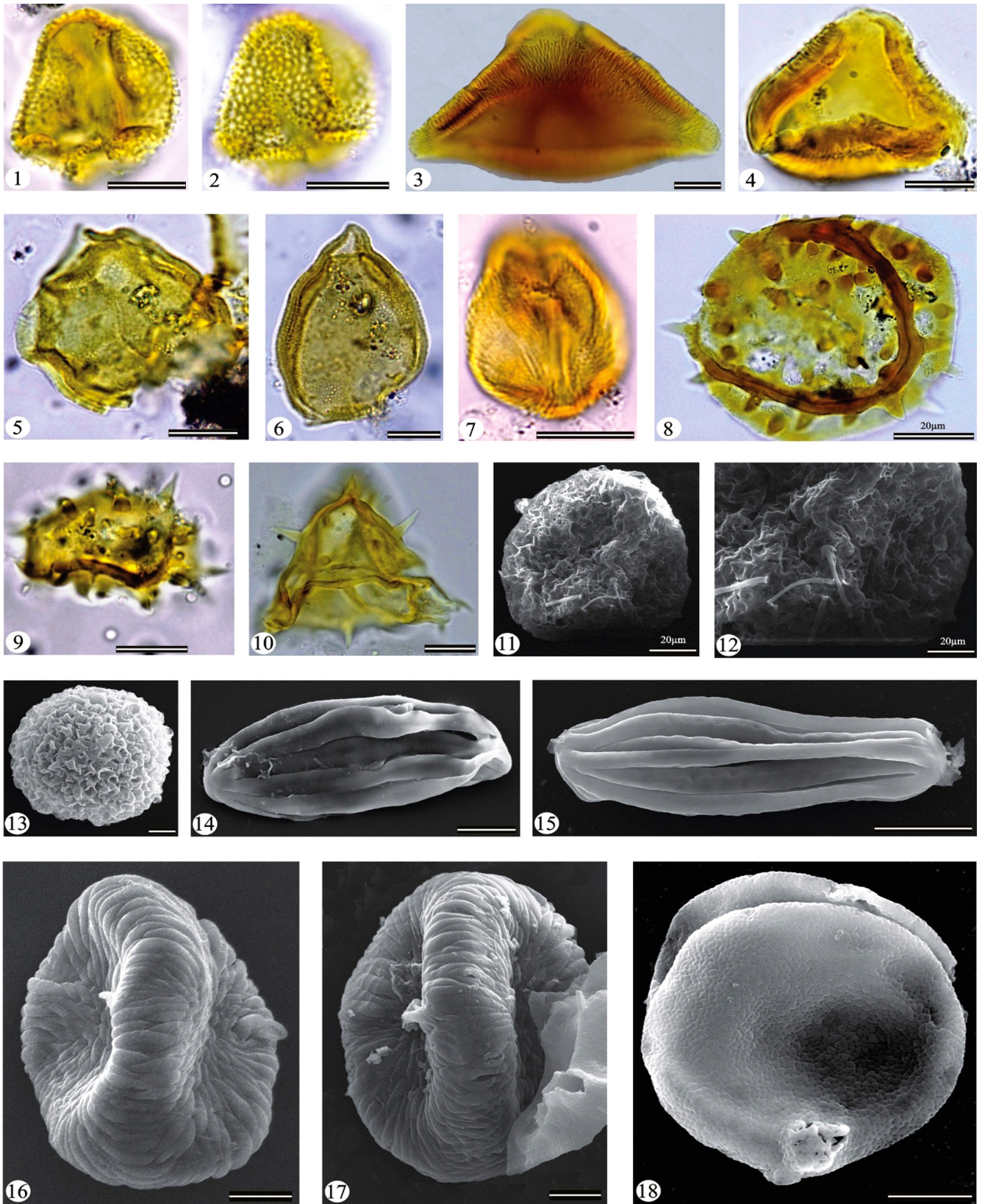
Indian fossil record: Infratrappan sediments of Ashtona, Yavatmal district, Maharashtra.

EXPLANATION OF PLATE-II



(Scale bar represents 10 μm or otherwise mentioned)

Figs.- 1-2 *Incrotonipollis neyvelii* (Baksi, Deb and Siddhanta) Jansonius and Hills 1981; Slide Nos.- (1, 2) PGNU/BT/IT/8; Figs.- 3-4. *Jiangsupollis major* Song 1980; Slide Nos.- (3) PGNU/KN/IT/18, (4) PGNU/BT/IT/8; Figs.- 5-6 *Proxapertites operculatus* Van der Hammen 1956; Slide Nos.- (5) PGNU/BT/IT/8 (6) PGNU/BT/IT/4; Fig.- 7. *Striacolporites* sp. in equatorial view; Slide No.- PGNU/BT/IT/4; Figs.- 8-9. *Spinizonocolpites echinatus* Muller 1968; Slide No.- (8) PGNU/KN/IT/19 and (9) PGNU/BT/IT/4; Fig.- 10. *Spinizonocolpites* sp. A; Slide No.- PGNU/BT/IT/8; Figs.- 11-12. *Azolla cretacea* Stanley 1965 (Fig. 2- Magnified view of Glochida); Fig.- 13. *Gabonispuris vigourouxii* Boltzenhagen 1967; Fig.- 14. *Ephedripites ovatus* Pierce 1961; Fig.- 15. *Ephedripites* sp.; Figs.- 16-17. *Aquilapollenites bengalensis* Baksi and Deb extended Samant, Mohabey and Paudyal 2013; Fig.- 18. *Proxapertites operculatus* Van der Hammen 1956



(B): Studied microfauna and invertebrates and their concentration

Fauna	Locality	Group	Fossil Taxa	Fossils count	References
Micro foraminiferal Linings	Kanhobaghohi	?Foraminifera	Trochospiral Type A	15	Present Study
			Trochospiral Type B	17	
			Trochospiral Type C	10	
			Trochospiral Type D	01	
Gastropods	Bhainsaghat	Mollusca	<i>Physa</i> , <i>Lymnia</i> , <i>Turitella</i> , <i>Viviformis</i> and <i>Paludina</i>	> 50	GSI unpublished reports: Tiwari and Bhattacharya (1986); Bhattacharya and Rao (1988) and Present Study
Freshwater (limnic) Ostracodes	Kanhobaghohi	Arthropoda	<i>Candoniella</i> sp.	> 50	Present Study
			<i>Cypridopsis</i> sp.	> 50	
			<i>Paracyprretta</i> sp.	> 10	
			<i>Paracyprretta jonesi</i>	> 20	
Bivalves	Hatnajhiri	Arthropoda	<i>Mongolianella</i> sp.	> 20	Srivastava and Kandwal (2013)
	Hiradehi	Mollusca	<i>Unio deccanensis</i> , (?) <i>Venericardiasp.</i>	-	

C) Microforaminiferal Linings

a) Trochospiral Type A (Pl. IV, Figs. 1-4)

Description: Form trochospiral; almost circular in shape; coiled; multicellular; multi chambered; proloculus rarely visible however when present very small in size and circular in shape; cells are concentrically arranged, central/inner cells small in comparison to peripheral cells, cells pentagonal to rectangular in shape, in some forms height of the cells is more than width, in some vice versa; septa thick; aperture rarely visible, when present about 14-25 μm in size; wall thin (0.5-1 μm) sometimes thick (about 2 μm); wall smooth.

Dimensions: about 30-55 x 57-63 μm in size; septa 1.5-2 μm thick.

Remarks: Coiled, trochospiral forms are the diagnostic features of these specimens. The above described forms (Trochospiral Type A) are recorded only from Kanhobaghohi intertrappean.

Type Locality and Horizon: Kanhobaghohi intertrappean (chert), Betul District, Madhya Pradesh.

Affinity: Uncertain.

Specimen studied: 15.

b) Trochospiral Type B (Pl. IV, Figs. 5-9)

Description: Form trochospiral; sub-circular to oval in shape; multichambered; cells rectangular to slightly elliptical, sometimes pentagonal; inner cells small and

pentagonal, outer cells rectangular, outer cells sometimes have more width than length; septa and wall of more or less equal thickness; wall thick to thin and smooth.

Dimensions: about 34-64 x 65-70 μm in size; wall about 1-2 μm thick.

Remarks: Sub-circular to oval shape, small size of the cells, outer cells wider than long are the diagnostic features of these specimens. Trochospiral A has less number of chambers and large size of chambers than that of Trochospiral B.

Type Locality and Horizon: Kanhobaghohi intertrappean (chert), Betul District, Madhya Pradesh.

Affinity: Uncertain.

Specimen studied: 17.

c) Trochospiral Type C (Pl. IV, Fig. 10-11)

Description: Form trochospiral; circular to oval in shape; multichambered; cells rectangular to circular; test with processes, processes thin and broad, sometimes with many spines/ processes are present on individual cells; wall thick to thin, generally smooth.

Dimensions: about 53-58 x 63-68 μm in size; spines/ processes about 2-4 μm long; wall about 1-2 μm thick

Remarks: Rectangular to oval shape and presence of spines/processes on cells are the diagnostic features of these specimens.

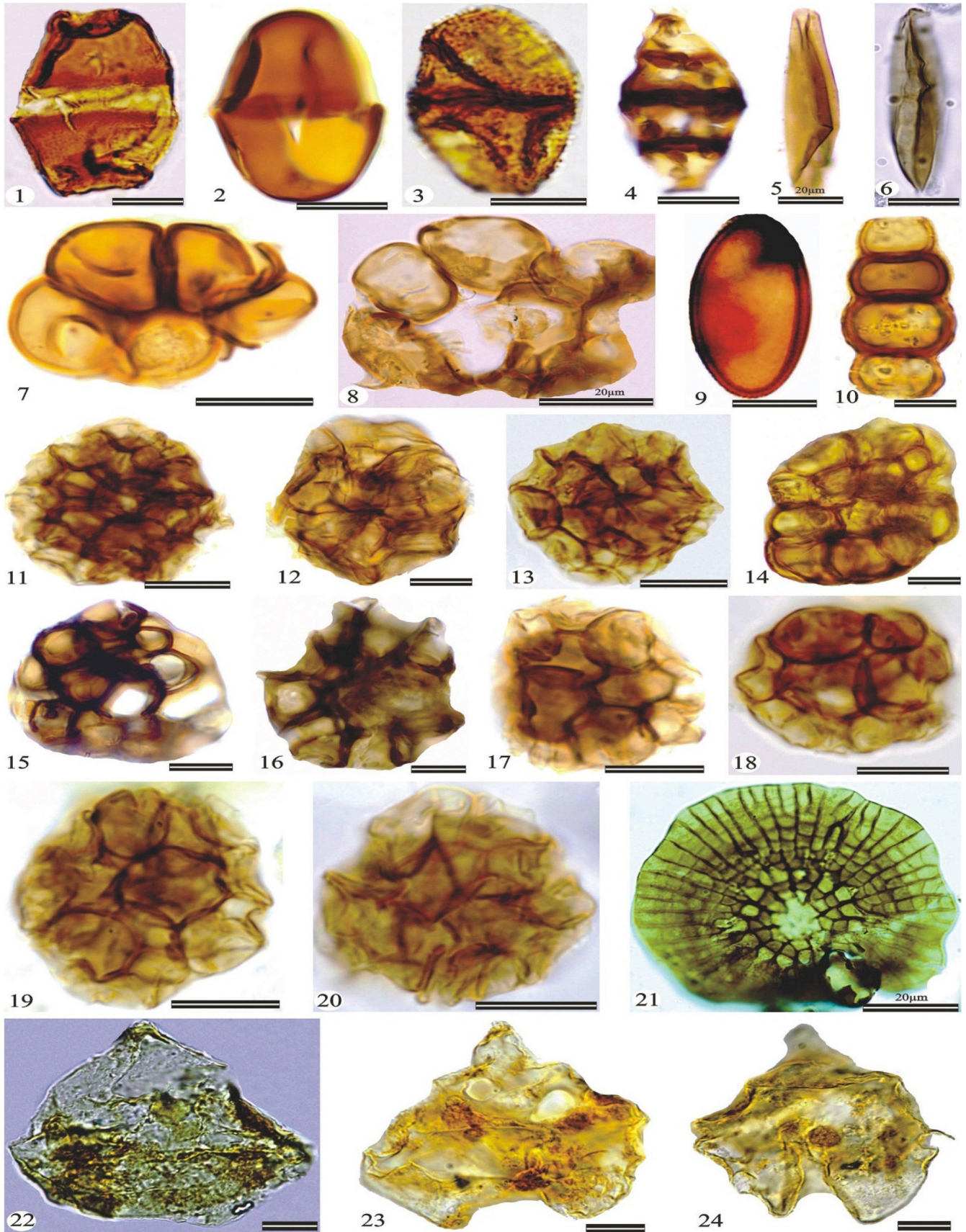
Type Locality and Horizon: Kanhobaghohi intertrappean (chert), Betul District, Madhya Pradesh.

EXPLANATION OF PLATE-III

(Scale bar represents 10 μm or otherwise mentioned)



Fig.-1 *Dicellaesporites intertrappea* sp. nov.; Slide No.- PGNU/KN/IT/12; Figs.- 2-3 *Dicellaesporites* sp.; Slide Nos.- (2) PGNU/KN/IT/10 and (3) PGNU/KN/IT/12; Fig.- 4 *Diporicellaesporites fusiformis* Ramanujam and Srisailam 1980; Slide No.- PGNU/KN/IT/20; Fig.-5 *Inapertisporites* sp. A; Slide No.- PGNU/It40; Fig.- 6 *Inapertisporites* sp. B; Slide No.- PGNU/BT/IT/4; Figs.- 7-8. *Involutisporonites* sp.; Slide Nos.- (7) PGNU/KN/IT/20 and (8) PGNU/KN/IT/21; Fig.-9. *Monoporisporites* sp.; Slide No.- PGNU/JM/IT/22; Fig.- 10. *Multicellites* sp.; Slide No.-PGNU/KN/IT/23; Figs.- 11-14. *Papulosporonites multicellatus* (Saxena & Singh 1982a) Kalgutkar & Jansonius 2000; Slide Nos.- (11) PGNU/KN/IT/24, (12) PGNU/KN/IT/16; (13) PGNU/KN/IT/25 and (14) PGNU/KN/IT/23; Figs.- 15-16. *Papulosporonites siwalikus* (Saxena & Bhattacharyya 1987) Kalgutkar & Jansonius 2000; Slide Nos.- (15) PGNU/KN/IT/21 and (16) PGNU/KN/IT/5; Figs.- 17-20. *Papulosporonites subcircularis* (Chandra *et al.*, 1984) Kalgutkar & Jansonius 2000; Slide Nos.- (17) PGNU/KN/IT/16, (18) PGNU/KN/IT/26, (19) PGNU/Knhbgl-2, R/It16 and (20) PGNU/ KN/IT/21; Fig.- 21. *Phragmothyrites* sp.; Slide No.- PGNU/KN/IT/27; Figs.- 22-24. *Pierceites deccanensis* Prasad *et al.* 2018; Slide Nos.- (22) PGNU/HRD/IT/28; (23) PGNU/HRD/IT/28 and (24) PGNU/HRD/IT/28.



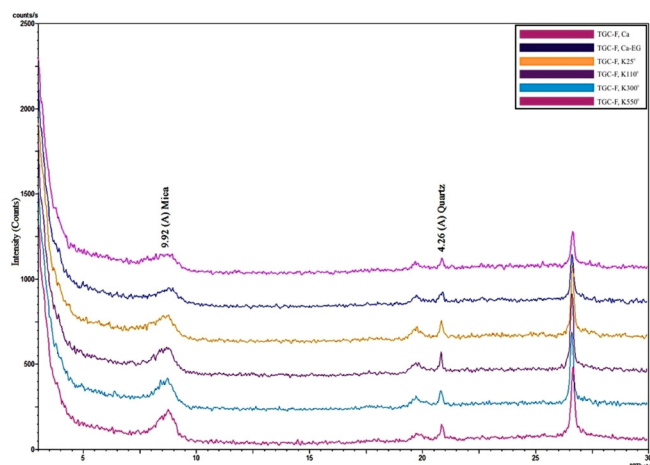


Fig. 6(A): X-Ray Diffraction pattern of Fine clay (Green) in intertrappean sediments of Topidhana section.

Affinity: Uncertain.
Specimen studied: 10.

d) Trochospiral Type D
(Pl. IV, Fig. 12)

Description: Form trochospiral; oval to subcircular in shape; multichambered; multicellate; cell wall thin, cells small and almost equal in size, polygonal, sometimes rectangular; wall thin and smooth.

Dimensions: about 60–69 μm in size; cell wall about 0.5–1 μm ,

Remarks: Trochospiral forms, oval to subcircular shaped and large number of small cells of almost equal size are the diagnostic features of these specimens. It differs from type A, B in having large number of small chambers.

Type Locality and Horizon: Kanhobagholi intertrappean (chert), Betul District, Madhya Pradesh.

Affinity: Uncertain
Specimen studied: 01

IV) Freshwater (limnic) Ostracodes

Phylum: Arthropoda Von Siebold, 1848

Subphylum: Crustacea Pennant, 1777

Subclass: Ostracoda Latreille, 1806

Order: Podocopina Muller 1894

Suborder: Cypridocopina Jones, 1901

Superfamily: Cypridoidea Baird, 1845

Family: Candoniidae Kaufmann, 1900

Genus: Candoniella Schneider, 1956

Type species: Candoniella suzini Schneider, 1956

Candoniella sp.

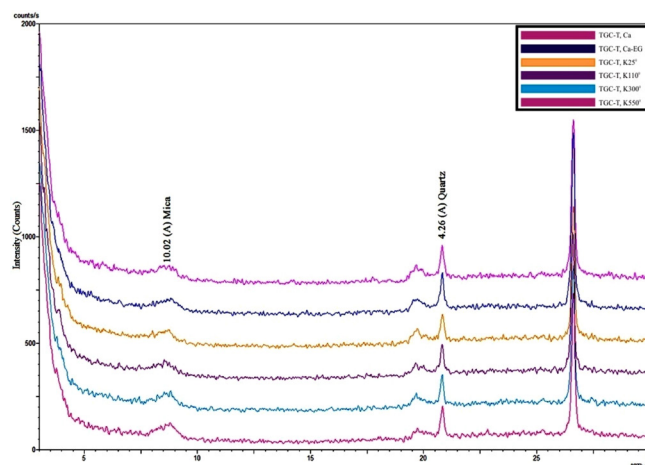


Fig. 6 (B): X-Ray Diffraction pattern of Total clay (Green) in intertrappean sediments of Topidhana section.

(Pl. V, Figs. 1-3, Photographs under light microscope).
(Pl. V, Figs. 16-19, Photographs under SEM).

Material: 25 carapaces.

Description: Carapace small and large, elongate in the lateral view, dorsal margin arched and slightly flat, closer view of dorsal margin showing nodes in SEM (Pl. V, fig.- 17), ventral margin almost straight or slightly convex, anterior and posterior sides rounded, left valve large (Pl. V, figs.- 1, 19), curvature is different at posterodorsal, dorsal and anterodorsal margins, surface of valve smooth.

Dimensions: Length- 2.1-1.3 mm, width- 0.7-0.5 mm.

Remarks: Carapaces large elongate, surface almost smooth and pointed endtowards anterior side are the characteristic features. At higher magnification, nodes are seen with smooth ornamentation on surface view.

Type Locality and Horizon: Kanhobagholi intertrappean (light brownish shale). Betul district, Madhya Pradesh.

Specimen studied: 10.

Genus: Cypridopsis Brady, 1868

Type species: Cypris vidua O. F. Müller, 1776

Cypridopsis sp.

(Pl. V, Figs.- 4-6, Photographs under light microscope).

(Pl. V, Figs.- 20-23, Photographs under scanning electron microscope, SEM).

Material: 20 carapaces.

Description: Carapace subspherical, reniform, sub-ovate in lateral outline, subcircular, laterally inflated fragments, length equals to width; arched, sub-angulate and subcircular in dorsal outline, fusiform; dorsal margin strongly convex;

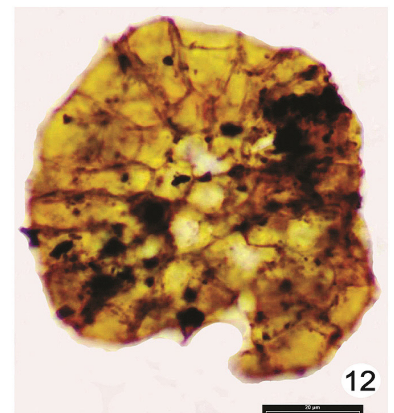
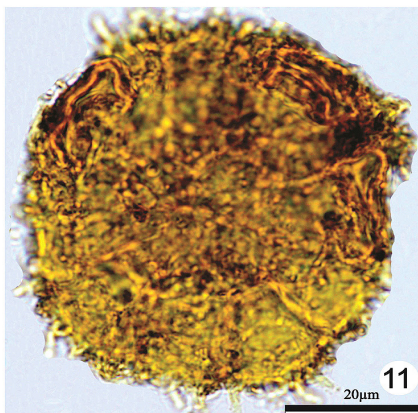
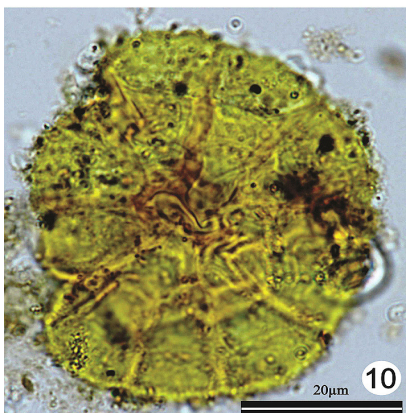
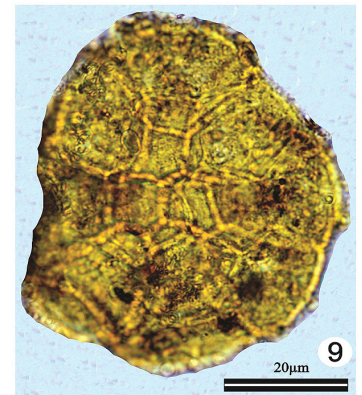
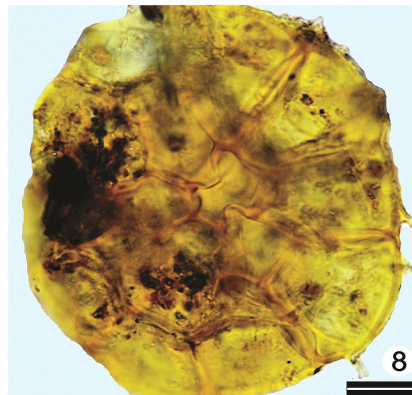
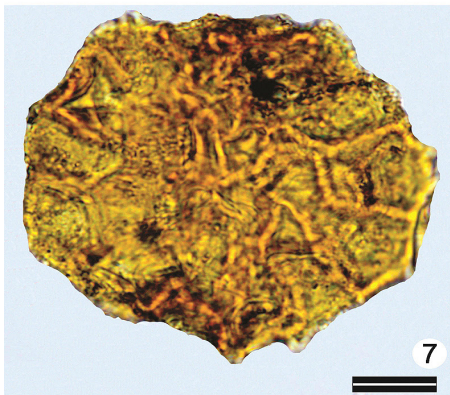
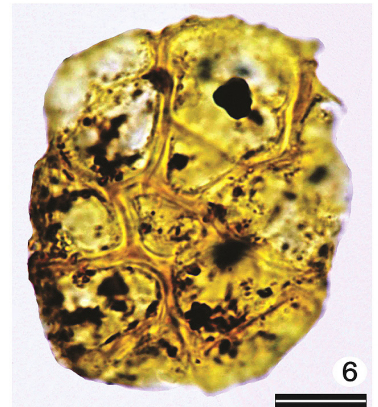
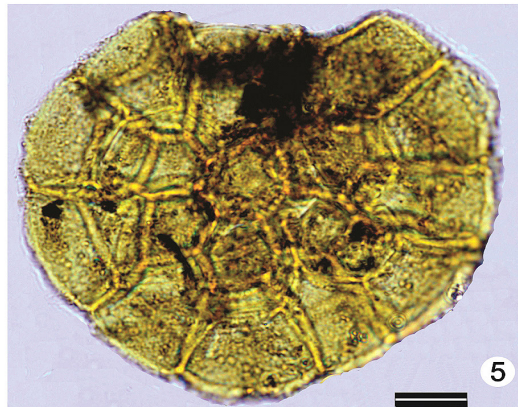
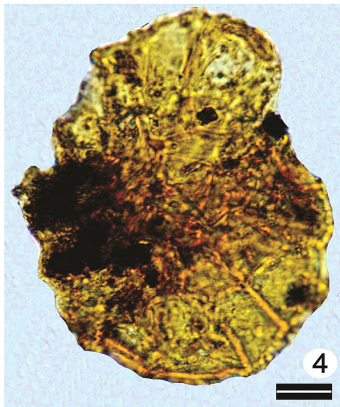
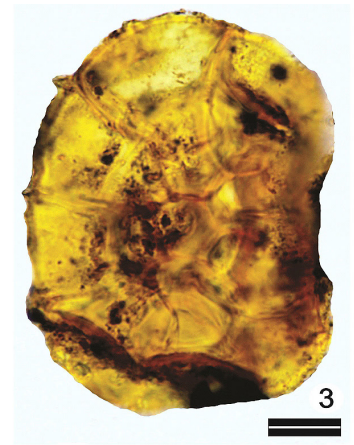
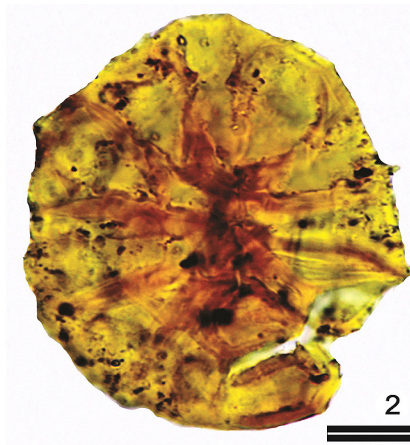
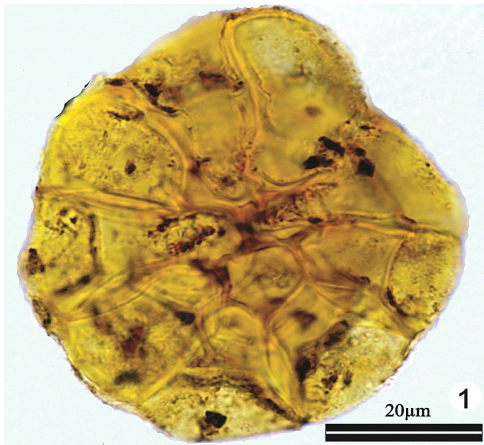
EXPLANATION OF PLATE-IV

(Scale bar represents 10 μm or otherwise mentioned)



Microforaminiferal linings: Figs.- 1-4. **Trochospiral Type A** Slide Nos.- (1) PGNU/KN/IT/29; EF-63V/3, (2) PGNU/KN/IT/30; EF-64H/1, (3) PGNU/KNhgl-B1/It56; EF-63V/2, (4) PGNU/KN/IT/29; EF-59S/4. Figs.- 5-9. **Trochospiral Type B** Slide Nos.- (5) PGNU/KN/IT/29; EF-53W, (6) PGNU/KN/IT/29; EF-52D/1, (7) PGNU/KN/IT/29; EF-38U/2, (8) PGNU/KN/IT/29; EF-68M/1, (9) PGNU/KN/IT/29; EF-56O. Figs.- 10-11. **Trochospiral Type C** Slide Nos.- (10) PGNU/KN/IT/31; EF-65R/1, (11) PGNU/KN/IT/29; EF-40P/4. Fig.- 12. **Trochospiral Type D** Slide No.- PGNU/KN/IT/29; EF-67X/2.

Plate IV



ventral margin with slight concavity; left valve and right valve more or less equal; dorsal margin strongly arched, ventral margin meridionally concave, apex at mid-height; posterior margin sloping in upper half and rounded in lower half, apex below mid-height. In dorsal view, carapace biconvex, with maximum width slightly posterior to middle, anterior end pointed and posterior end rounded, tumid appearance in dorsal view, and the obtusely angled dorsal margin differentiate this species from other species of *Cypridopsis*.

Dimensions: Length- 0.9-0.7 mm; width- 0.6-0.5 mm.

Type Locality and Horizon: Kanhobagholi intertrappean, (light brownish shale rock) and Hatnajhiri intertrappean, (greenish fossiliferous chert rock), Betul district, Madhya Pradesh.

Remarks: In SEM, pitted ornamentation are observed on the surface of entire valves.

Specimen studied: 10.

Genus: *Paracyprretta* Sars, 1924

Paracyprretta jonesi Bhatia and Rana, 1984

(Pl. V, Figs.- 7-9, Photographs under light microscope).

Material: 40 carapaces.

Description: Large carapaces; inflated, subtriangular in lateral view and very arcuate to subumbonate dorsally; dorsal margin symmetrically convex, subangulate in the middle; greatest height and width nearly equal and about 2/3 of length; left valve and right valve almost equal in size or left valve larger than right valve, overlapping all along margin; dorsal margin symmetrically convex, subangulate in the middle; ventral margin straight; posterior margin slightly compressed; anterior and posterior margins broadly rounded; surface of each valve ornamented with minute and very dense puncta.

Dimensions: Length- 1.4-1.2 mm; width- 1-0.8 mm.

Remarks: For the first time, Bhatia and Rana (1984) reported this species from the intertrappean beds of Gitti Khadan, Nagpur.

Type Locality and Horizon: Kanhobagholi intertrappean (light brownish shale), Betul district, Madhya Pradesh.

Specimen studied: 10.

Genus: *Paracyprretta* Sars, 1924

Paracyprretta sp.

(Pl. V, Figs- 10-12, Photographs under light microscope).

Material: 15 carapaces.

Description: Large carapaces, inflated, subtriangular laterally; subovate in lateral outline; compressed anteriorly, anterior margin broadly rounded and posterior margin narrowly rounded than the anterior; left valve slightly larger than right valve, dorsal margin gently arched to nearly straight; ventral margin with a slight anteroventral concavity; left valve overlaps right valve along dorsal and posterior margins.

Dimensions: Length- 1.2-1 mm; width- 0.9-0.7 mm.

Remarks: The important characters in these species are the presence of reticulate ornamentation. Surface ornamented has very minute pits in ventral half. Pits are densely or sparsely spaced.

Type Locality and Horizon: Kanhobagholi intertrappean (light brownish shale), Betul district, Madhya Pradesh.

Specimen studied: 10.

Type species: Mongolianella palmosa Mandelstam, 1956

Mongolianella sp.

(Pl. V, Figs. 13-15, Photographs under light microscope).

Material: 20 carapaces.

Description: Carapace large; elongate (bean shaped), subrectangular to subcylindrical; dorsal margin in which the central part is straight and slightly convex upward; fusiform; ventral margin almost straight or slight concave in the middle of it; the left and large valve overlaps the right one around the anteriodorsal margin and the middle part of ventral margin; maximum height at the anterior part, anterior part broadly rounded, posterior end narrowly rounded; surface of valve smooth.


Dimensions: Length- 1.1-0.9 mm; width- 0.5-0.3 mm.

Remarks: The species is widely recorded from the intertrappean beds.

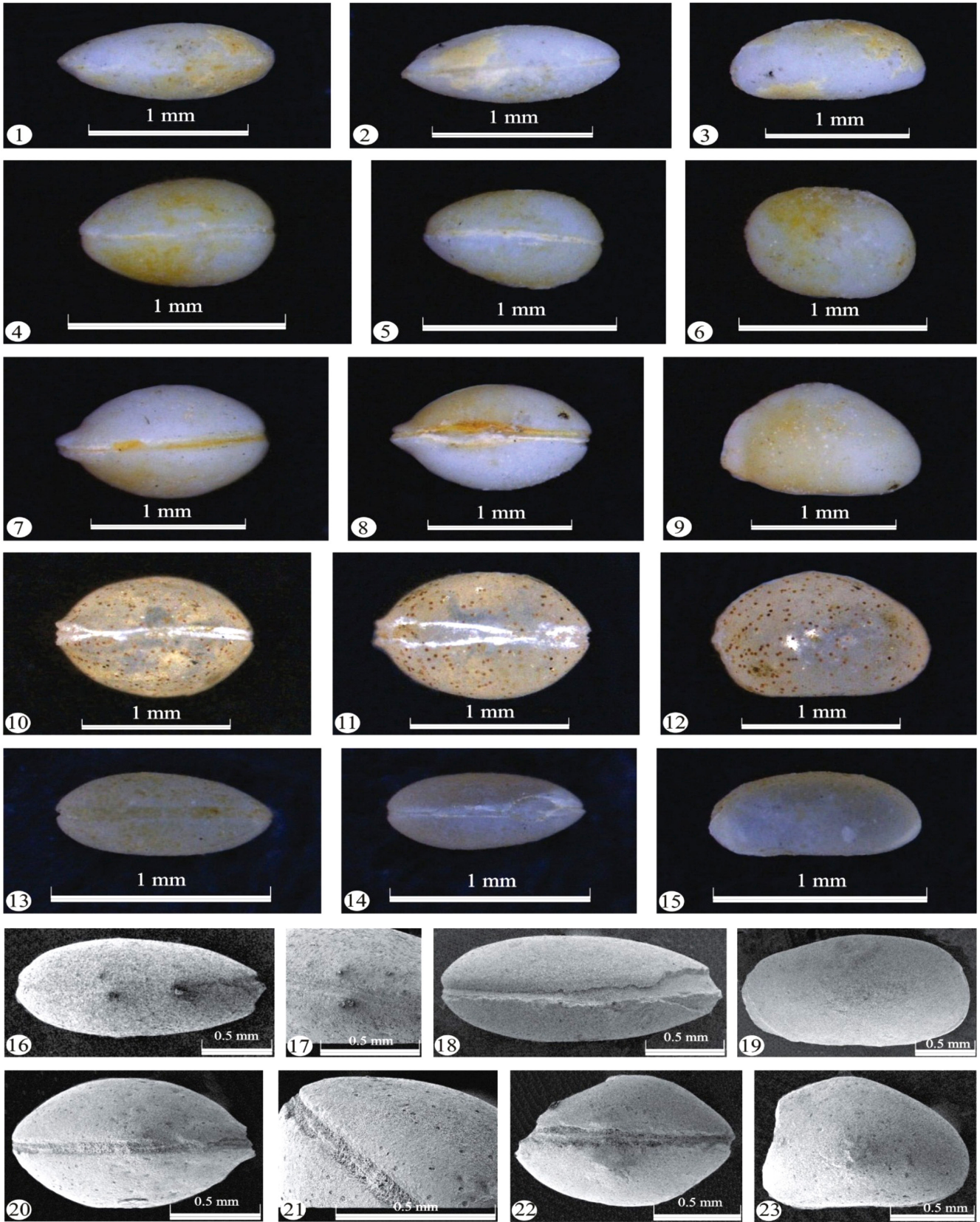
Type Locality and Horizon: Hatnajhiri intertrappean (greenish fossiliferous chert), Betul district, Madhya Pradesh.

Specimen studied: 10.

EXPLANATION OF PLATE-V

(Scale bar represents 1 mm) 

(a) Freshwater Ostracodes from Kanhobagholi intertrappean: Fig.-1. *Candoniella* sp. (Dorsal view); Slide No.- PGNU/KN/IT/36; Fig.-2. *Candoniella* sp. (Ventral view); Slide No.- PGNU/KN/IT/36; Fig.-3. *Candoniella* sp. (Right carapace); Slide No.-PGNU/KN/IT/36; Fig.-4. *Cypridopsis* sp. (Dorsal view); Slide No.- PGNU/KN/IT/37; Fig.-5. *Cypridopsis* sp. (Ventral view); Slide No.- PGNU/KN/IT/37; Fig.-6. *Cypridopsis* sp. (Left carapace); Slide No.- PGNU/KN/IT/37; Fig.-7. *Paracyprretta jonesi* (Dorsal view); Slide No.- PGNU/KN/IT/35; Fig.-8. *Paracyprretta jonesi* (Ventral view); Slide No.- PGNU/KN/IT/35; Fig.-9. *Paracyprretta jonesi* (Left carapace); Slide No.- PGNU/KN/IT/35; Fig.-10. *Paracyprretta* sp. (Dorsal view); Slide No.- PGNU/KN/IT/33; Fig.-11. *Paracyprretta* sp. (Ventral view); Slide No.- PGNU/KN/IT/33; Fig.-12. *Paracyprretta* sp. (Left carapace); Slide No.- PGNU/KN/IT/33; Fig.-13. *Mongolianella* sp. [Dorsal view (posterior to left)] Slide No.- PGNU/HRRS/IT/32; Fig.-14. *Mongolianella* sp. [Ventral view (posterior to left)] Slide No.- PGNU/HRRS/IT/32; Fig.-15. *Mongolianella* sp. (Left carapace) Slide No.- PGNU/HRRS/IT/32 (c) SEM of Freshwater Ostracodes from Kanhobagholi intertrappean: (Scale bar represents 0.5 mm) Fig.- 16. *Candoniella* sp. (Dorsal view); Slide No.- PGNU/KN/IT/34; Fig.-17. *Candoniella* sp. (Closer view showing nodes); Slide No.- PGNU/KN/IT/34; Fig.-18. *Candoniella* sp. (Ventral view); Slide No.- PGNU/KN/IT/34; Fig.-19. *Candoniella* sp. (Left carapace); Slide No.- PGNU/KN/IT/34; Fig.-20. *Cypridopsis* sp. (Dorsal view); Slide No.- PGNU/KN/IT/33; Fig.-21. *Cypridopsis* sp. (Closer view of the hinge); Slide No.- PGNU/KN/IT/33; Fig.-22. *Cypridopsis* sp. (Ventral view); Slide No.- PGNU/KN/IT/33; Fig.-23. *Cypridopsis* sp. (Right carapace); Slide No.- PGNU/KN/IT/33



DISCUSSION

Palynological study of intertrappean beds namely (i) Hiradehi-1, (ii) Hiradehi-2, (iii) Topidhana-1, (iv) Topidhana-2, (v) Bhainsaghat, (vi) Hatnajhiri, (vii) Jamunjhiri, (viii) Kanhobagholi, (ix) Divtiya, (x) Rambhakheri south, and (xi) Rambhakheri east, at 10 stratigraphic levels in Satpura Group was carried out. Flows in this part are not classified into different formation (GSI, Quadrangle Geological Map (QGM) 1998) as has been carried in Sahyadri, Amarkantak and Malwa Group by Geological Survey of India hence, Reduced Level (RL) is taken as a stratigraphic level in the study area. Stratigraphically, Hiradehi intertrappean occurs at the lowest stratigraphic level (RL 469, Fig. 2 I) and Rambhakheri at the highest stratigraphic level (RL 784; Fig 3, I). All the studied intertrappean in this area are sandwiched in between over 300 m thick lava pile at different stratigraphic levels. It is observed that intertrappean sediments at the lower levels, i.e. Hiradehi and Topidhana have dominantly aquatic microfossil and are devoid of fossil woods. Hiradehi intertrappean yielded monospecific fresh water peridinoïd dinoflagellate cyst *Pierceites deccanensis* (Pl. II, Fig. 22-24) and good number of fungal spores, a few chlamydo-spores of *Glomus* like mycorrhizal fungi and a lot of biodegraded plant remains. Topidhana intertrappean, which occurs at slightly higher stratigraphic level (RL 501, Fig 2, I, C) yielded mostly frustules of centric diatom *Aulacoseira*.

Peridinoïd dinocysts *Pierceites deccanensis* Prasad *et al.* (2018) from Hiradehi intertrappean shows similarity with dinocysts recorded from infratrappean sediments of Ashtona, Yavatmal district, Maharashtra (Prasad *et al.*, 2018) and intertrappean beds of Kurli in Yavatmal district, Maharashtra which also occur at lower stratigraphic levels (Samant and Mohabey, 2016). Record of centric diatoms *Aulacoseira* is common in the Late Cretaceous (Maastriichtian) Deccan volcanic associated Lameta and intertrappean sediments. Importantly, oldest record of this freshwater diatom is from the Lameta sediments of Nand-Dongargaon Basin (Ambwani *et al.*, 2003; Samant and Mohabey, 2014). These centric diatoms are ubiquitous and are known from the many intertrappean sediments in Chandrapur (Samant and Mohabey, 2014), Chhindwara district (Ambwani *et al.*, 2003; Thakre *et al.*, 2017) and Naskal, in Telangana (Singh *et al.*, 2007).

For palaeoclimatic interpretation clay minerals were also analyzed from Hiradehi and Topidhana intertrappean beds as these intertrappean beds have soft shales and clay (Figs. 2-3). In Hiradehi section, total clay fraction consists of dominantly Smectite (63.03%) and Quartz (36.96%) and fine clay fraction also has Smectite (58.99%) and Quartz (41.00%) (Table 3, Figs. 4 A, B). From the Topidhana section, two clay samples were analyzed. The lower white clay yielded only Smectite both in total clay and fine clay whereas upper green clays in total clay fraction yielded dominantly Quartz (63.15%) and Mica (36.84%). In fine clay fraction mica was dominant (68.87%) followed by Quartz (31.12%) (Table 3; Figs. 5 A, B and Figs. 6 A, B). Overall, Smectite dominant clays from Hiradehi and Topidhana sections indicate prevalence of arid to dry climatic conditions. Dominance of Quartz and mica in the upper part of the Topidhana intertrappean suggest detrital input into the lake, could be due to prevalence of aeolian

conditions caused by arid climatic conditions.

At the higher stratigraphic level (RL 759 m, Fig. 3, I) in Kanhobagholi intertrappean, good concentration of spores and pollen grains of pteridophytes, gymnosperms, angiosperms and Non Pollen Palynomorphs (NPPs) are recorded. Pteridophytes are represented by *Azolla cretacea*, *Cyathidites* sp., *Gabonisporsis vigouroxii*, gymnosperms by genus *Ephedripites*, and angiosperms by *Aquilapollenites bengalensis*, *Aquilapollenites intertrappeus*, *Echitricolpites* sp., *Farabeipollis minutus*, *Farabeipollis deccanensis* sp. nov., *Incrotonipollis neyvelii*, *Jiangsupollis major*, *Proxapertites operculatus*, *Striatricolporites* sp. and *Spinozonocolpites echinatus*. Non Pollen Palynomorphs (NPPs) are represented by fungal spores, epiphyllous fungi and microforaminiferal linings. Fungal spores of taxa *Dicellaesporites intertrappea* sp. nov., *Dicellaesporites* sp., *Diporicellaesporites fusiformis*, *Involutisporonites* sp., *Monoporisporites* sp., *Multicellites* sp., *Papulosporonites multicellatus*, *Papulosporonites siwalikus*, *Papulosporonites subcircularis*, and fungal fruit bodies of *Phragmothyrites* sp. are present in the assemblage.

Microforaminiferal linings recorded from the Kanhobagholi intertrappean sediments show close similarity with that of microforaminiferal linings recorded from Mohagaon Kalan intertrappean, Chhindwara district, Madhya Pradesh (Thakre *et al.*, 2017). Importantly, these linings from the intertrappean sediments are distinctly different in morphology, especially in cell structure and coiling pattern from the microforaminiferal lining recorded from the marine to near marine sediments of Bengal basin (Phadtare and Thakur, 1992), Paleogene sediments of western India (Tabaei and Singh 2002; Monga *et al.*, 2015), Assam (Kumar *et al.*, 2001) and Imphal (Singh *et al.*, 2013). Hence, it is probable that microforaminiferal linings from the intertrappean sediments belong to some extinct group.

In addition to microflora, this intertrappean also yielded well preserved megafloora, such as, fruit of *Indovitis* (Vitaceae; Manchester *et al.*, 2013), flowers of *Sahanipushpam* (?Araceae; locality spelled as Jaulkheda Kapgate *et al.*, 2011) and *Sahanianthus* (Dr. Dasharath Kapgate, personal communication) and many fossil woods and roots of dicot and monocot plants. Other nearby intertrappean localities in this area namely, Divtiya, Rambhakheri and Jamunjhiri (Fig. 3) also have fossil woods of dicot and monocot plants but macerated samples only yielded phytoclasts of plants and mycorrhizal fungi. Overall, presence of good number of fossil woods in many intertrappean beds at higher stratigraphic level indicate good vegetation in this part of Satpura Group.

On the basis of palynoassemblage such as, *Azolla cretacea*, *Gabonisporsis vigouroxii*, *Aquilapollenites bengalensis*, *Aquilapollenites intertrappeus*, *Echitricolpites* sp., *Farabeipollis minutus*, *Farabeipollis deccanensis* sp. nov., *Jiangsupollis major*, Late Cretaceous (Maastriichtian) age is assigned to this intertrappean. The recorded palynoassemblage show similarity with Maastriichtian palynoassemblage of Kurli, Daiwal, Khandala-Ashta, Anandvan, Surli and Sindhi of Nand-Dongargaon basin (Samant and Mohabey, 2009, 2014) and Singpur (Samant *et al.*, 2008), Mohagaon Kalan (Kar and Srinivasan, 1998; Kumaran *et al.*, 1997; Thakre *et al.*, 2017), Ranipur (Mathur and Sharma, 1990) and Padwar intertrappean beds (Prakash *et al.*, 1990, Kar *et al.*, 1998; Kar and Singh, 2014) in Mandla-Jabalpur-Chhindwara area in Amarkantak Group. Palynoflora

Table-3: Clay minerals in intertrappean sediments of Satpura Group, Betul district, Madhya Pradesh.

FM	Locality	Sample Nos.	Distribution of Clay Minerals				Total %
			Smectite	Mica	Kaolinite	Quartz	
IT	Hiradehi	HGC-FC	58.99	-	-	41.00	99.99
		HGC-TC	63.03	-	-	36.96	99.99
	Topidhana	TGC-FC	-	68.87	-	31.12	99.99
		TGC-TC	-	36.84	-	63.15	99.99
		TWC-FC	100.00	-	-	-	100.00
		TWC-TC	100.00	-	-	-	100.00

Abbreviations:

FM- Formation	HGC- Hiradehi Green clay
IT- Intertrappean sediments	TGC- Topidhana Green clay
FC- Fine clay	TWC- Topidhana White clay
TC- Total clay	

also show some similarity with Naskal intertrappean in South eastern part of Sahyadri Group (Singh *et al.*, 2006).

The palynomorphs such as *Proxapertites operculatus* and *Spinizonocolpites echinatus* from the Kanhobagholi intertrappean are also good depositional environment indicators. Fossil pollen of *Proxapertites operculatus* is an extinct monocot herb that is commonly recorded from the coastal environment along the shores of river channels and lagoons (Zetter *et al.*, 2001) and *Spinizonocolpites echinatus* is related to back mangrove rhizomatic palm *Nypa* which grows in brackish to estuarine conditions (Muller, 1979). Hence, presence of *Proxapertites operculatus* and *Spinizonocolpites echinatus* suggest estuarine depositional environment. Interestingly, in addition to estuarine depositional environment indicator palynomorphs, fresh water taxa such as *Azolla cretacea* (Salviniaceae) and *Gabonispuris* (Marsileaceae) have also been recorded from this intertrappean. This intertrappean has also yielded fresh water ostracodes such as *Candoniella* sp., *Cypridopsis* sp., *Paracyprretta* sp. and *Paracyprretta jonesi*. Hence, overall biota of this intertrappean suggests estuarine to fresh water depositional conditions at the time of deposition.

Some reproductive fruit bodies of epiphyllous fungi mainly of family microthyriaceae are also present in this intertrappean. These fungi are abundantly found in forest of tropical and subtropical climate and they require heavy rainfall rather than temperature for their growth. High precipitation and air humidity are crucial factors for their growth (Selkirk, 1975; Johnson and Sutton, 2000; Limaye *et al.*, 2007) and they show highest abundance and taxonomic diversity in warm and humid subtropical to tropical regions (Reynolds and Gilbert, 2005; Thuang, 2006; Hofmann, 2010; Hosagoudar *et al.*, 2011; Piepenbring *et al.*, 2011; Dilcher, 1965; Selkirk, 1975; Lange, 1976; Elsik, 1978; Kalgutkar and Jansonius, 2000; Tripathi, 2009; Conran *et al.*, 2016). Record of epiphyllous fungi and many fossil woods of dicot and monocot plants from the Kanhobagholi intertrappean sediments suggest good vegetation and prevalence of warm and probably humid climatic conditions at the time of deposition. Freshwater ostracodes from Kanhobagholi and Hatnajhiri intertrappeans of Satpura Group of Betul district, Madhya Pradesh are represented by four genera

and one species namely *Candoniella* sp., *Cypridopsis* sp., *Mongolianella* sp. and *Paracyprretta jonesi*. Recorded ostracodes show similarity with the freshwater ostracodes assemblage reported from other intertrappean beds (summarized in Khosla and Verma, 2015).

CONCLUSIONS

Palynological studies of 11 intertrappean beds namely Kanhobagholi, Rambhakhedi (two sections), Divtiya, Jamunjhiri, Hatnajhiri, Bhainsaghat, Hiradehi (two sections) and Topidhana (two sections) of Satpura Group, in Betul district have provided valuable insight into biota, age, depositional environment and climate of palaeontologically scarcely explored Satpura Group. Palynological data shows presence of aquatic flora dominating intertrappean beds at the lower stratigraphic levels and good terrestrial vegetation at the higher stratigraphic levels.

Hiradehi intertrappean yielded monospecific peridinoid dinoflagellate cysts *Pierceites deccanensis* and Topidhana intertrappean mostly centric diatom *Aulacoseira* which suggest that initially aquatic biota dominated the water bodies. Smactite dominated clays and chertified limestone in this area suggest prevalence of arid to semiarid climatic conditions at the time of deposition.

Kanhobagholi intertrappean at the higher stratigraphic levels yielded good number of well-preserved spores and pollen assemblage along with fungal spores and microfaminiferal linings. Palynoflora has pteridophytes-angiosperm dominated assemblage. Taxa such as, *Azolla cretacea*, *Gabonispuris vigourouxii*, *Aquilapollenites bengalensis*, *Aquilapollenites intertrappeus*, *Echitricolpites* sp., *Farabeipollis minutes*, *Farabeipollis deccanensis* sp. nov., *Jiangsupollis major*, suggest Late Cretaceous (Maastrichtian) age for this intertrappean. Presence of pollen grains of *Proxapertites operculatus*, *Spinizonocolpites*, *Azolla cretacea*, *Gabonispuris* and epiphyllous fungi of family Microthyriaceae and many dicot and monocot fossil woods in this intertrappean suggests deposition in warm, humid climatic conditions in freshwater to estuarine depositional environment.

Lithology, clay mineralogy, and microfossil assemblage from the intertrappean sediments of Satpura Group indicate change in climatic conditions from semiarid to arid in the lower stratigraphic level (Hiradehi, and Topidhana) to warm humid at the higher stratigraphic level (Kanhobagholi, Jamunjhiri, Divtiya and Rambhakheri).

Palynoassemblage of Kanhobagholi intertrappean shows close similarity with Maastrichtian palynoassemblage of Sahyadri Group (Daiwal, Anandvan, Khandala-Ashta, Kurli, Shimbala, Shankar Lodhi, Singpur) and Amarkantak Group (Mohgaon Kalan Fossil Forest, Ranipur and Padwar). Hiradehi intertrappean has dinoflagellate cysts *Pierceites deccanensis* which show similarity with dinocysts recorded from the Maastrichtian intertrappean sediments of central India. Topidhana intertrappean has ubiquitous centric diatom *Aulacoseira*.

Two intertrappean beds namely Kanhobagholi and

Hatnajhiri intertrappeans yielded some well preserved fresh water ostracodes. The recovered forms show similarity with the freshwater limnic ostracodes assemblage reported from many intertrappean beds of Deccan volcanic province

ACKNOWLEDGEMENTS

Bandana Samant and D.M. Mohabey are thankful to the Ministry of Earth Sciences, New Delhi (MoES/PO (Geosci)/49/2015) and University Grant Commission-SAP-II grant for financial assistance. We are also thankful to Prof. S. R. Manchester, University of Florida, USA for help in SEM studies, Thanks are also due to Dr. D. K. Kappate for help in field study. We are grateful to Dr. P. Chandran (Principal Scientist, NBSS & LUP), Nagpur for providing laboratory facility for X-Ray Diffraction (XRD) analysis of clay minerals. Authors are also thankful to the Head, Post Graduate Department of Geology, RTM Nagpur University, Nagpur for providing working facilities.

REFERENCES

- Alvarez, L. W., Alvarez, W., Asaro, F. and Michel, H. V. 1980. Extraterrestrial cause for the Cretaceous/Tertiary extinction: *Science*, 208: 1095-1108.
- Ambwani, K., Sahni, A., Kar, R. K. and Dutta, D. 2003. Oldest known non marine diatoms (*Aulacoseira*) from the Uppermost Cretaceous Deccan Intertrappean beds and Lameta formation of India. *Review de Micropaleontology*, 46: 67-71.
- Baird, W. 1845. Arrangement of the British Entomostraca, with a list of species, particularly noticing those which have as yet been discovered within the bounds of the club. *Transactions of the Berwickshire Naturalists' Club*, 2: 145-158.
- Bhatia, S. B. and Rana, R. S. 1984. Palaeogeographic implications of the charophyta and Ostracoda of the intertrappean beds of peninsular India. *Mémoire de la Société géologique de France*, Paris, 147: 29-36.
- Bhattacharya, A. K. and Rao, T. N. 1988. Report on Systematic Geological Mapping of Deccan Trap flows and associated rocks around Atner-Hirli-Kothalkund, Betul district, Madhya Pradesh. Progress report for field session 1987-1988. Geological Survey of India (Unpublished Report).
- Boltenhagen, E. 1967. Spore et pollen du Cre'tace' superieur du Gabon. *Pollen Spores*, 9: 335-355.
- Bonde, S. D. 2008. Indian fossil monocotyledons: Current status, recent developments and future direction. *Palaeobotanist*, 57: 141-164.
- Brady, G. S. 1868. A monograph of the recent British Ostracoda. *Geological Survey Paleontological Bulletin*, 26: 353-495.
- Chandra, A., Saxena, R. K. and Setty, M. G. A. P. 1984. Palynological Investigation of the sediment cores from the Arabian Sea. 1. Fungal spores. *Biovigyanam*, 10(1): 41-58.
- Chenet, A. L., Quidelleu, X., Fluteau, F., Courillot, V. and Bajpai, S. 2007. ⁴⁰K-⁴⁰Ar dating of the main Deccan large igneous province: further evidences of KTB age and short duration, *Earth Planet Science Letters*, 263: 1-15.
- Chenet, A. L., Fluteau, F., Courillot, V., Gerard, M. and Subbarao, K. V. 2008. Determination of rapid Deccan eruption across the KTB using paleomagnetic secular variation: 1. Results from 1200 m thick section in the Mahabaleshwar escarpment, *Journal of Geophysical Research*, 113.
- Clarke, R. T. 1965. Fungal spores from Vermejo Formation coal beds (Upper Cretaceous) of Central Colorado. *Mountain Geologist*, 2: 85-93.
- Conran, J. G., Bannister, J. M., Reichgelt, T. and Lee, D. E. 2016. Epiphyllous fungi and leaf physiognomy suggest an ever-wet humid mesothermal (subtropical) climate in the late Eocene of southern New Zealand. *Palaeogeography, Palaeoclimatology, Palaeoecology*, 452: 1-10.
- Couper, R. A. 1953. Upper Mesozoic and Cenozoic spores and pollen grains from New Zealand. *New Zealand Geological Survey Paleontological Bulletin* 22: 1-77.
- Courillot, V., Besse, J., Vandamme, D., Montigny, R., Jaeger, J.-J. and Cappetta, H. 1986. Deccan flood basalts at the Cretaceous/Tertiary boundary? *Earth Planet Science Letters*, 80 (3-4): 361-374.
- Courillot, V. Y., Gallet, R., Rocchia, G., Feraud, E., Robin, C., Hoffman, N. Bhandari and Ghevariya, Z. G. 2000. Cosmic markers, 40Ar/39Ar dating and paleomagnetism of the KT sections in the Anjar Area of the Deccan large igneous province. *Earth Planet Science Letters*, 182: 137-156.
- Cox, K. G. and Hawkesworth, C. J. 1984. Relative contribution of Crust and Mantle to Flood Basalt Magmatism, Mahabaleshwar area, Deccan Traps. *Philosophical Transactions of Royal Society, London*, 310: 627-641.
- De Silva Pares Regali, P. M., Uesugui, I. and De Silva Santos, A. 1974. Palinologia dos sedimentos Meso-Cenozoicas do Brail (II). *Boln. Tecn. Petrobras*, 17: 263-301.
- Deshmukh, S. S. 1984. Petrography and petrochemistry of the Deccan basalts in Maharashtra. *Geol. Surv. India Spec. Publ.*, 12: 56-76.
- Deshmukh, S. S., Sano, T. and Nair, K. K. K. 1996. Geology and chemical stratigraphy of the Deccan basalts of Chikaldara and Behramghat sections of the eastern part of the Deccan Trap province, India. *Gondwana Geological Magazine*, 2: 1-22.
- Dilcher, D. L. 1965. Epiphyllous fungi from Eocene deposits in western Tennessee, U.S.A. *Palaeontographica Abt. B. Palaephytol.*, 116: 1-54.
- Edwards, W. N. 1922. An Eocene microthyriaceous fungus from Mull, Scotland. *Transactions of the British Mycological Society*, 8: 66-72.
- Elsik, W. C. 1968. Palynology of a Paleocene Rockdale lignite, Milam County, Texas. 1. Morphology and taxonomy. *Pollen Spores*, 10(2): 263-314.
- Elsik, W. C. 1978. Classification and geologic history of the Microthyriaceous fungi. *Proceedings of the IV International Palynological Conference, Lucknow (1976-77)*, 1: 331-342.
- Geological Survey of India. 1998. Betul Quadrangle Geological Map of 55G, Madhya Pradesh and Maharashtra, Geological Survey of India Publication.
- Geological Survey of India. 2002. District Resource Map of Betul District, Maharashtra: Kolkata, Geological Survey of India publication.
- Habib, D. and Drugg, W. S. 1987. Palynology of Sites 603 and 605, Leg 93, Deep Sea Drilling Project. In: van Hinte, J. E., Wise, S. W., et al., Deep Sea Drilling Project, Washington Initial Reports (U.S. Govt. Printing Office), 92: 751-775.
- Hansen, H. J., D. M. Mohabey, S. Lojen, P. Toft, and A. Sarkar. 2005. Orbital cycles and stable carbon isotopes of sediments associated with Deccan Volcanic Suite, India: Implications for the stratigraphic correlation and Cretaceous/Tertiary boundary. *Gondwana Geological Magazine, special volume* 8: 5-28.

- Hofmann, T. A. 2010. Plant parasitic Asterinaceae and Microthyriaceae from the Neotropics (Panama). Ph.D thesis. The faculty of biological sciences at the JW Goethe-University Frankfurt am Main, Germany, p. 408.
- Hosagoudar, V. B., Jagath, T. C. and Jayashankara, M. 2011. Five Asteridiella species from Kodagu, Karnataka, India. *Mycosphere*, 2: 611-615.
- Jackson, M. L. 1979. "Soil Chemical Analysis-Advanced Course". Published by the Author, Madison, WI.
- Jansonius, J. and Hills, L. V. 1981. Genera file of fossil spores supplement 5; Special Publication, Department of Geology, University of Calgary, cards, pp. 3801-3932.
- Jay, A. E. and Widdowson, M. 2008. Stratigraphy, Structure and Volcanology of the SE Deccan continental flood basalt province, implications for eruptive extent and volumes. *Journal Geological Society of London*, 165: 177-188.
- Jones, T. R. 1901. In: Chapman F (ed.), On some fossils of Wenlock age from Mulde, near Klinteberg, Gotland. *Ann Mag Nat Hist*, 7: 141-160.
- Johnson, E. M. and Sutton, T. B. 2000. Response of two fungi in the apple sooty blotch complex to temperature and relative humidity. *Phytopathology*, 90: 362-367.
- Kale, V.S., Dole, G., Shandilya, P., and Pande Kanchan. 2020 Stratigraphy and correlations in Deccan Volcanic Province, India: Quo vadis. *Geological Society of America Bulletin*, 132: 588-607.
- Kalgutkar, R. M. and Jansonius, J. 2000. Synopsis of fungal spores, mycelia and fructifications. *Am. Assoc. Strat. Palynol. Contribution Series*, 39: 1-423.
- Kapgate, D. K. 2005. Megafloral analysis of intertrappean sediments with focus on diversity and abundance of flora of Mohgaonkalan, Mandla and adjoining areas of Madhya Pradesh. *Gond. Geol. Magz.*, 20(1): 31-46.
- Kapgate, D. K., Awasthi, N., Manchester, S.R. and Chitale, S.D. 2011. Inflorescence and flowers of *Sahnipushpam* Shulka from the Deccan Intertrappean beds of India. *Acta Paleobotanica*, 51(2): 207-227.
- Kar, R. K. and Saxena, R. K. 1976. Algal and fungal microfossils from Matanomadh Formation (Paleocene), Kutch, India. *Palaeobotanist*, 23(1): 1-15.
- Kar, R. K. and Srinivasan, S. 1998. Late Cretaceous palynofossils from the Deccan intertrappean beds of Mohgaon Kalan, Chhindwara District, Madhya Pradesh. *Geophytol.*, 27: 17-22.
- Kar R. K., Sahni A., Ambwani, K. and Singh R. S. 1998. Palynology of Indian Onshore-Offshore Maastrichtian sequence in India: Implications for correlation and paleogeography India; *J. Petrol. Geol.* 7: 39-49
- Kar, Ratan and Singh R.S. 2014. Earliest record of slime moulds (Myxomycetes) from the Deccan intertrappean beds (Maastrichtian), Padwar, India. *Current science* 107(8): 1237-1239.
- Kaufmann, A. 1900. Cypriden und Darwinuliden der Schweiz. *Revue Suisse de Zoologie. Annales de la Soci'et'e Zoologique de Suisse*, 8: 209-423.
- Khosla, A. and Verma, O. 2015. Paleobiota from the Deccan volcano-sedimentary sequences of India: paleoenvironments, age and paleobiogeographic implications. *Historical Biology*, 27(7): 898-914. <https://doi.org/10.1080/08912963.2014.912646>.
- Krutzsch, W. 1961. Contribution to the spore-paleontology of the pre-Upper Oligocene-Oligocene continental and marine Tertiary sediments of Branden. *Berichte der geologischen Gesellschaft*, 4: 290-343.
- Kumaran, K. P. N., Bonde, S. D. and Kanitkar, M. D. 1997. An Aquilapollenites associated palynoflora from Mohagaon Kalan and its stratigraphic implications for age and stratigraphic correlation of Deccan intertrappean beds. *Current Science*, 72(8): 590-592.
- Kumar M, Mandal J, Dutta S K, Bhuyan D, Das B and Saikia B 2001. Palynostratigraphy of the subsurface sediments of Upper Assam basin, India. *Geobios*, 34: 241-251.
- Lange, R. T. 1976. Fossil epiphyllous "germlings", their living equivalents and their palaeohabitat indicator value; *Neues Jahrbuch für Geologie und Paläontologie, Abhandlungen*, 151: 142-165.
- Latreille, P. A. 1806. *Cenera Crustaceorum et Insectorum, Tomus Primus*. A. Koenig, Paris, p. 302.
- Limaye, R. B., Kumaran, K. P. N., Nair, K. M. and Padmalal, D. 2007. Non pollen palynomorphs as potential palaeoenvironmental indicators in the Late Quaternary sediments of the west coast of India. *Current Science*, 92: 1370-1382.
- Manchester, R. S., Kapgate, D. K. and Wen, J. 2013. Oldest fruits of the grape family (Vitaceae) from the Late Cretaceous Deccan cherts of India. *American Journal of Botany*, 100(9): 1849-1859.
- Mandelstam, M. I. 1956. In: *Materialy po Paleontologii. Novye semeystvai rody: Ostracoda (Materials for Palaeontology. New families and genera: Ostracoda)* (Ed. G.F. Schneider). *Trudy Vsesoyuznogo Neftyanogo Nauchno-Issledovatel'skogo Geologo-Razvedochnogo Instituta (VNIGRI)*, Novaya Seriya, 12: 87-144 (306-323).
- Mathur, N. S. and Sharma, S. D. 1990. Palynofossils and age of the Ranipur intertrappean beds, Gaur River, Jabalpur, M.P. In: Sahni, A. and Jolley, A. (Eds.) *Cretaceous event stratigraphy and correlation of Indian non-marine strata, Chandigarh. International Geological Correlation Project 216-245*, pp. 58-59.
- Mohabey, D. M. and Samant, B. 2013. Deccan Continental Flood Basalt Eruption Terminated Indian Dinosaurs before the Cretaceous-Paleogene Boundary. *Geological Society of India Special Publication*, 1: 260-267.
- Mohabey, D. M. and Samant, B. 2019. Cretaceous-Paleogene Transition of Reptilian Tetrapods across Deccan Volcanism in India. *Open Journal of Geology*, 9: 639-642 <https://www.scirp.org/journal/ojg>, ISSN Online: 2161-7589.
- Mohabey, D. M., Samant, B., Kumar, D., Dhobale, A., Rudra, A. and Dutta, S. 2018. Record of charcoal from early Maastrichtian intertrappean lake sediments of Bagh valley of Madhya Pradesh: palaeofire proxy. *Current Science*, 114 (7): 1540-1544.
- Monga, P., Kumar, M., Prasad V. and Joshi, Y. 2015. Palynostratigraphy, palynofacies and depositional environment of a lignite-bearing succession at Surkha Mine, Cambay Basin, northwestern India. *Acta Palaeobotanica*. 55 (2): 183-207.
- Muller, O. F. 1776. *Zoologicae Danicae Prodomus, seu animalium Danicae et Norvegiae indigenarum characteres, nomina, et synonyma primis Popularium, Havniae*, p. 1-282.
- Muller, G. W. 1894. Die Ostracoden des Golfes von Neapel und der angrenzenden Meeresabschnitte. *Fauna Flora Golfes Neapel*, 21: 1-404.
- Muller, J. 1968. Palynology of the Pedawan and Plateau sandstone formations (Cretaceous-Eocene) in Sarawak, Malaysia. *Micropalaeontology*, 14: 1-37.
- Muller, J. 1979. Reflection of fossil palm pollen. In: Bharadwaj, D. C. (Ed.) *Proceedings of 4th International Palynological Conference*, 1, Birbal Sahni Institute of Paleobotany, Lucknow, 568-578.
- Nair, K. K. K., Chatterjee, A. K. and Sano, T. 1996. Stratigraphy and geochemistry of the Deccan basalt along Toranmal section, western Satpura region. *Gondwana Geol. Mag.*, 2: 23-48.
- Nandi, B. and Chattopadhyay, S. 2002. Triprojectate pollen grains from the Late Cretaceous sediments of Meghalaya. *Acta Paleont. Sinica*, 41(4): 601-610.
- Pant, P.R. and Murty, B.V.S. 2004. Geophysical exploration for coal-The Indian scenario. *Memoir Geological Society of India* 59: 1-310.
- Pennant, T. 1777. *British zoology*, Vol. IV. Crustacea. Mollusca. Testacea. London, England: Benjamin White.
- Phadtare, N. R. and Thakur, B. 1992. Distribution and Paleoecologic efficacy of Microforaminiferal organic linings from deep sea Quaternary sediments off Vishakhapatnam coast. *Indian Journal of Marine Sciences*, 21: 246-250.
- Piepenbring, M., Hofmann, T. A., Kirschner, R. and Mangelsdorff, R. et al. 2011. Diversity patterns of Neotropical plant parasitic microfungi. *Ecotropica*, 17: 27-40.
- Pierce, R. L. 1961. Lower Upper Cretaceous plant microfossils from Minnesota. *Bulletin of the Minnesota Geological Survey, University of Minnesota*, 42: 1-86.
- Potonie, R. 1958. *Synposos der Gattungen der sporae dispersae II Teli: Sporites (Nadnrage). Saccites, Aletes. Praecolpates, Monocolpates.-Beih. Geol. Jb.*, 31: 1-114.
- Prakash, T., Singh, R. Y. and Sahni, A., 1990. Palynofloral assemblage from the Padwar Deccan intertrappean (Jabalpur) M.P., in Sahni, A., and Jolly, A., eds., *Cretaceous Event Stratigraphy and Correlation of Indian Non Marine Strata: Chandigarh, International Geological Correlation Project 216-245*, pp. 68-69.
- Prasad, V., Farooqui, A., Murthy, S., Sarate, O. S. and Bajpai, S. 2018. Palynological assemblage from the Deccan Volcanic Province, central India: Insights into early history of angiosperms and the terminal

- Cretaceous paleogeography of peninsular India. *Cretaceous Research*, doi: 10.1016/j.cretres.2018.03.004.
- Ramanujam, C. G. K. and Srisailam, K. 1980. Fossil fungal spores from the Neogene Beds around Cannanore in Kerala state. *Botanique*, 9(1-4): 119-138.
- Renne, P. R., Sprain, C. J., Richards, M. A., et al., 2015. State shift in Deccan volcanism at the Cretaceous-Paleogene boundary, possibly induced by impact. *Science*, 350: 62-56.
- Reynolds, D. R. and Gilbert, G. S. 2005. Epifoliar fungi from Queensland, Australia. *Australian Systematic Botany*, 18: 265-289.
- Sah, S. C. D. and Kar, R. K. 1970. Palynology of the Laki sediments in Kutch: 3. Pollen from the bore-holes around Jhulrai, Baranda and Panandhro: *Palaeobotanist*, 18: 127-142.
- Samant, B., Mohabey, D. M. and Kapgate, D. K. 2008. Palynofloral record from Singpur Intertrappean, Chhindwara district, Madhya Pradesh: Implication for Late Cretaceous stratigraphic correlation and resolution: *J. Geol. Soc. India*, 71: 851-858.
- Samant, B. and Mohabey, D. M. 2009. Palynoflora from Deccan volcano sedimentary sequence (Cretaceous-Paleogene transition) of central India: implications for spatio-temporal correlation, *J. Biosci.*, 34 (5): 811-823.
- Samant, B., Mohabey, D. M. and Paudyal, K. N. 2013. Aquilapollenites and other Triprojectate pollen from the Late Cretaceous-early Paleocene Deccan intertrappean deposits of India. *Palynology*, 37: 298-315.
- Samant, B. and Mohabey, D. M. 2014. Deccan volcanic eruptions and their impact on flora: Palynological evidence. *Geological Society of America Special Papers*; 505: 171-191.
- Samant, B. and Mohabey, D. M. 2016. Tracking temporal palynofloral changes close to Cretaceous-Paleogene Boundary in Deccan volcanic associated sediments of eastern part of central Deccan volcanic province. *Global Geology*, 19 (4): 205-215.
- Sars, G. O. 1866. Oversigt af Norges marine ostracoder. *Förhandlingeri Videnskabs-Selskabeti Christiania*, 1865: 1-130.
- Sars, G. O. 1924. The freshwater Entomostraca of the Cape Province (Union of South Africa) Ostracoda. *Ann S Afr Mus*, 20: 105-193.
- Saxena, R. K. and Bhattacharyya, A. P. 1987. Palynology of the Siwalik sediments of Kala Amb-Nahan area in Sirmour District, Himachal Pradesh. *Palaeobotanist*, 35 (2): 187-195.
- Saxena R. K. & Singh H. P. 1982, a. Palynological investigation of the Upper Siwalik sediments exposed along Hoshiarpur-Una Road Section in Punjab and Himachal Pradesh. *Geophytology*, 12(2): 287-306.
- Schneider, G. F. 1956. Gen. *Pseudoleperditia* Schneider. gen. nov. *Materialy po paleontologii*, p. 87. (In Russian).
- Schoene, B., Samperton, K.M., Eddy, M.P., Keller, G., Adatte, T., Bowring, S.A., Khadri, S.F.R. and Gertsch, B. 2015. U-Pb geochronology of the Deccan Traps and relation to the end- Cretaceous mass extinction. *Science*, 347(6218): 182-184.
- Selkirk, D. R. 1975. Tertiary fossil fungi from Kiandra, New South Wales; *Proc. Linn. Soc. Nw.*, 100: 70-94.
- Sheffy, M. V. and Dilcher, D. L. 1971. Morphology and taxonomy of fungal spores. *Palaeontographica Abt. B*, 133 (1-3): 34-51.
- Sheth, H. C. and Pande, K. 2014. Geological and ⁴⁰Ar/³⁹Ar age constraints on late-stage Deccan rhyolitic volcanism, inter-volcanic sedimentation, and the Panvel flexure from the Dongri area Mumbai. *Asian Journal of Earth Sciences*, 84: 167-175.
- Singh, R. S., Kar, R. and Prasad, G. V. R. 2006. Deccan intertrappean beds of Naskal, Rangareddi District, Andhra Pradesh. *Current Science*, 90: 1281-1285.
- Singh R. S., Stoermer E. F., and Kar R 2007. Earliest freshwater diatoms from the Deccan intertrappean (Maastrichtian) sediments of India; *Micropaleontology* 52: 541-551
- Singh, Y. R., Li, J., Singh, B. P. and Gurusaribam, V. 2013. Microforaminiferal linings from the upper part of the Upper Disang Formation at Gelmoul quarry, Churachandpur, Imphal valley and their bearing on palaeoenvironment. *Current Science*, 105 (9): 1223-1226.
- Smith, S. Y., Manchester, S. R., Samant, B., Mohabey, D. M., Wheeler, E., Baas, P., Kapgate, D., Srivastava, R. and Sheldon, N. D. 2015. Integrating Paleobotanical, Paleosol and Stratigraphy data to study critical transitions: A case study from the Late Cretaceous-Paleocene of India. In: *Earth-life Transitions: Paleobiology in the context of Earth System Evolution*. The Paleontological Society papers, P. David Polly, Jason J. Head and David L. Fox (eds.). The Paleontological Society Short Course. The Paleontological Society, 21: 137-166.
- Song, Z. C., Zheng, Y. H., Liu, J. L., Ye, P. Y., Wang, C. F. and Zhou, S. F. 1980. Cretaceous-Tertiary spore-pollen assemblages of northern Jiangsu. Paper for 50th International Palynological Conference, 1-17. Nanjing Institute of Geology and Palaeontology, Academia Sinica.
- Sprain, C. J., Renne, P. R., Vanderkluyssen, L., Pande, K., Self, S. and Mittal, T. 2019. The eruptive tempo of Deccan volcanism in relation to the Cretaceous-Paleogene boundary. *Science*, 363: 866-870.
- Srivastava, A. K. and Kandwal, N. K. 2013. Depositional Environment and Bivalve Remains of the Intertrappean Sediments, Hiradehi and Topidhana Area, Bhainsdehi Tehsil, district Betul, Madhya Pradesh. *Gondwana Geological Magazine*, 28 (2): 149-157.
- Stancliffe, R. P. W. 1989. Microforaminiferal linings: their classification, biostratigraphy and palaeoecology with special reference to specimens from British Oxfordian sediments. *Micropalaeontol.*, 35: 337-352.
- Stanley, E. A. 1965. Upper Cretaceous and Paleocene plant microfossils and Paleocene dinoflagellates and hystrichosphaerids from northwestern South Dakota. *Bull. Amer. Palaeontol.*, 49: 179-384.
- Tabaei, M. and Singh, R. Y. 2002. Palaeoenvironment and paleoecological significance of micro foraminiferal linings in the Akli lignite, Barmer Basin, Rajasthan, India. *Iran. Int. J. Sci.* 3 (2): 263-277.
- Thakre, D., Samant, B., Mohabey, D. M., Sangode, S., Srivastava, P., Kapgate, D. K., Mahajan, R., Upreti, N. and Manchester, S. R. 2017. New insight into age of intertrappean beds of Mohagaon Kalan, Chhindwara District, Madhya Pradesh using palynology, megafloora, magnetostratigraphy and clay mineralogy. *Current Science*, 112(11): 2193-2197.
- Thaung, M. M. 2006. Biodiversity of phylloplane ascomycetes in Burma. *Australasian Mycologist*, 25: 5-23.
- Tiwari, M. and Bhattacharya, A. K. 1986. The Geology of Deccan Traps and associated rocks around Amla-Multai-Parasia-Linga, Chhindwara and Betul Districts, Madhya Pradesh. Progress report for field session 1984-1985. Geological Survey of India (Unpublished Report).
- Tripathi, S. K. M. 2009. Fungi from palaeoenvironments: their role in environmental interpretations. In Misra, J. K. and Deshmukh, S. (eds.) *Fungi from different environments*. Science Publishers Enfield, Hampshire, USA, pp. 1-27.
- Van der Hammen T. 1954, a. El desarrollo de la flora Colombiana en los periodos geologicos-1. Maestrichtiano hasta Terciario mas inferior (Una investigacion Palinologica de la formacion de Guaduas y equivalentes). *Boletin Geologico (Bogota)*, 2(1): 49-106.
- Van der Hammen T. 1954, b. Principios para la nomenclatura Palinologica sistematica. *Boletin Geologico (Bogota)*, 2(2): 3-24.
- Van der Hammen T. 1956. A palynological systematic nomenclature. *Boletin Geologico (Bogota)*, 4: 63-101.
- Von Siebold, C. T. 1848. *Lehrbuch der vergleichenden Anatomie der Wirbellosen Thiere*. Erster Theil. In: von Siebold, C.T. & Stannius, H. (eds.), *Lehrbuch der vergleichenden Anatomie*. Verlag von Veit & Comp., Berlin, p. 679.
- Zetter, R., Hesse, M. and Frosch-Radivo, A. 2001. Early Eocene zona-aperturate pollen grains of the Proxapertites type with affinity to Araceae. *Review Paleobotany and Palynology*, 117: 267-279.